

McMaster
University



HEALTH SCIENCES

McMaster Midwifery Research Centre

Report

Jan 2020 - June 2022



Midwifery
Research Centre

McMaster University Midwifery Research Centre (MMRC)

Report

January 2020 - June 2022

Submitted by

Dr. Beth Murray-Davis, Scientific Director

McMaster University Midwifery Research Centre

Follow us on Twitter <https://twitter.com/macmidwifery>
Facebook <https://www.facebook.com/MacMidwifery/>
Website <https://mmrc.mcmaster.ca/>
Email mmrc@mcmaster.ca
YouTube <https://www.youtube.com/channel/UCuMz6uafj4JbxLuGuA9vomQ>



Table of Contents

WELCOME FROM THE SCIENTIFIC DIRECTOR	4
MMRC AT A GLANCE	5
ABOUT THE MCMASTER MIDWIFERY RESEARCH	6
RESEARCH AREAS	7
STRATEGIC PLAN	8
CENTRE MISSION AND VISION	8
MEMBERSHIP	9
Centre scientists	10
Adjunct scientists	12
Fellows	19
Organizational	24
Scientific Advisory Committee	23
Research staff	29
GOVERNANCE & OPERATIONS	30
Reporting lines	30
EDUCATION & TRAINING	30
Trainees	33
Events	36
Research Symposium 2022	36
Research Symposium 2020	36
Research Rounds and Workshops	37
MMRC Research Lunch & Learn Drop-In	38
McMaster Midwifery Research Foundation Grant Program	38

Table of Contents

HONOURS & AWARDS 39

FINANCIAL STATUS 40

New research grants awarded 41

Existing/active and new grants 42

RESEARCH PRODUCTIVITY 49

Collaborations with other
Principal Investigators 50

Centre scientist peer reviewed publications 52

Peer reviewed oral and
poster presentations at meetings 63

McMaster e-Book Foundry Textbooks 68

Welcome from the Scientific Director

Like most people and organizations, the MMRC has experienced challenges and opportunities during the Coronavirus pandemic. We have also paused and reflected as issues of racism, inequity, and injustice have been raised within the midwifery profession, the university, and our wider society. Since 2020, we have experienced changes in the way we work, we have had set backs and celebrations, but we have also continued to strive to meet our mission of conducting midwifery research that informs policy, practice, and education and improves outcomes for birthing people and their families.

Just before the pandemic began we engaged in a strategic planning process and identified four central areas that are critical to the growth of our centre. These include:

- a. Funding - Establishing stable funding
- b. Collaboration - Strengthen our collaborations
- c. Engagement - Engaging with our members
- d. Excellence - Continuing to disseminate high quality researcher

In the pages of this report, I think you will see that we have been highly successful across all these domains! In particular, we are proud of a) the ways in which we engaged with members of the public through our advisory committee and research projects, so that the voices of service users and stakeholders can be centred in our work, and of b) the new collaborations within our McMaster community, thanks to synergies with new research faculty in our Department of Obstetrics and Gynecology under the leadership of new chair Dr. Jon Barrett.

As we look ahead, we are in the process of planning to offer our first series of research awards funded through the McMaster Midwifery Research Fund. We are also excited to see how the research capacity and growth of the centre will be enhanced with the first cohort of the Master of Science in Midwifery program beginning this fall. We hope to support these students in their growth as researchers and scholars through our rounds and workshops, and through opportunities to engage in existing projects.

Looking back over the past few years, it is remarkable what we have accomplished. I am grateful to all our staff, students, members, faculty, and scientists who through resilience and flexibility have continued to demonstrate excellence, innovation and dedication to our centre during these difficult times.



Dr. Beth Murray-Davis, Scientific Director,
McMaster Midwifery Research Centre

Beth Murray-Davis RM, PhD

MMRC at a Glance

Jan 2020 - June 2022

Research Activity

71 Centre Scientist publications 8 New grants with MMRC faculty
33 Active research grants \$2,056,391 New research funding

Capacity Building

28 Oral and poster presentations 6 Research rounds
2 MMRC-hosted symposia 7 Honours

MMRC Engagement

8 Research staff members 21 Trainees
33 Adjunct & Fellow members 10 Scientific advisory committee members



Web: <https://mmrc.mcmaster.ca/>

Visit us at



Facebook: McMaster University
Midwifery (@MacMidwifery)



Twitter: McMaster Midwifery
@MacMidwifery

About the McMaster Midwifery Research Centre

The McMaster University Senate formerly approved the creation of the McMaster Midwifery Research Centre (MMRC) in July 2018. The MMRC is of critical importance for the growth of the midwifery profession in Canada and internationally. In the years leading up to the formation of the centre, midwifery research at McMaster was burgeoning, but lacked a home. We are really pleased to have this centre to house the work being done. We are proud of the increasing research capacity within the profession and the growing number of trainees and researchers who are making contributions to the knowledge and evidence of midwifery. The MMRC offers a hub where these efforts can be formalized, coordinated, and supported, thereby facilitating greater collaboration, productivity and broader impact and dissemination of research.

The functions of MMRC are to:

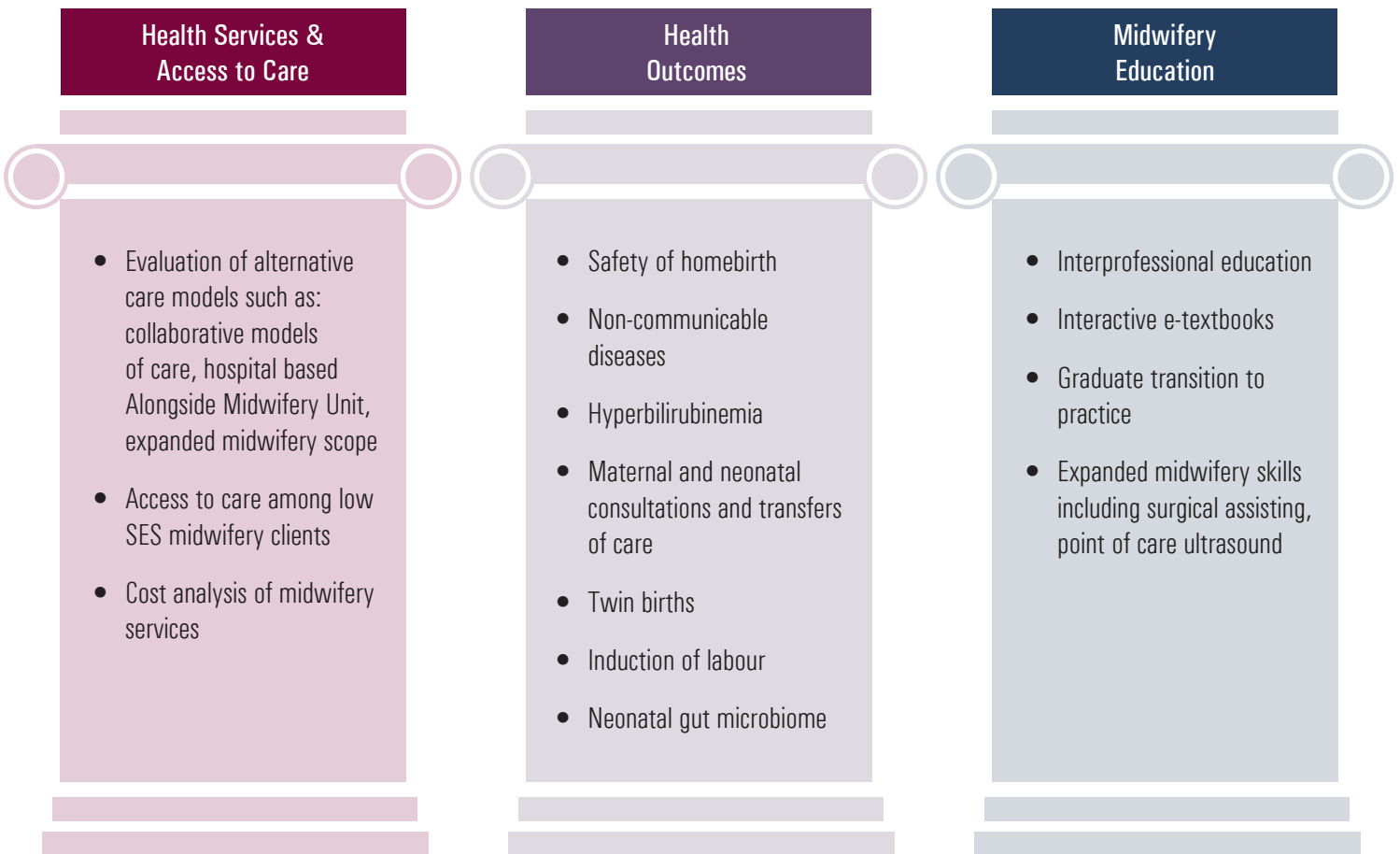
- 1 Facilitate research and research collaborations.
- 2 Act as the point of contact for provincial midwifery, well woman and newborn research.
- 3 Disseminate research results through scholarly papers, conferences, meetings, and other activities. This may include knowledge translation activities such as continuing education opportunities for midwifery clinicians.
- 4 Support and strengthen midwifery undergraduate education and interdisciplinary graduate students by providing research mentorship, training opportunities, and access to facilities.
- 5 Seek external research funds to ensure the sustainability of the Centre.
- 6 Oversee MMRC discretionary funds in consultation with the Scientific Advisory Committee.

Research Areas

Our research focuses on clinical and educational topics in the field of midwifery and maternal/child health.

Our research includes a variety of approaches, methods, and disciplines, including: clinical epidemiology, randomised controlled trials, cohort studies, large database studies (Better Outcomes Registry Network (BORN) Ontario, Institute of Clinical Evaluative Sciences (ICES)), knowledge translation, quality improvement, qualitative and quantitative methods, mixed methods, health policy, and health economics.

Our research is organized into three broad areas, or pillars, with examples of studies under each pillar, as illustrated below:



Strategic Plan



In December 2019, members and friends of the MMRC met for a day-long workshop to develop a strategic plan for the Centre. The strategic plan is intended to drive actions and decision-making for next 3 to 5 years, with initiatives focusing on five objectives, including:

1. **Engagement** - to develop a value based organizational design that formalizes roles, processes, responsibilities and resources; and to develop points of entry and pathways for engagement for students, midwives, researchers, policy makers etc., public organizations
2. **Collaboration** - To initiate and foster our network with McMaster and externally; and to identify and implement strategies to ensure public involvement in development and execution of research
3. **Excellence** - To expand brand recognition; and to identify and implement metrics of the Centre's impact in order to inform future direction
4. **Funding** - To develop stable short term and long term funding base

Despite the effect of the ensuing Covid-19 pandemic, the MMRC is working well towards these objectives that will shape the direction and future of the Centre.

MISSION

“We are dedicated to excellence in midwifery research that informs policy, practice and education.”

“To be an internationally recognized centre that promotes excellence in maternal child health and healthcare through the generation of evidence to optimize midwifery care.”

VISION



There are five levels of membership within the centre: Scientist, Adjunct, Fellow, General, and Organizational members. The following section describes our members, their research areas and affiliations, our Scientific Advisory Committee members, and our research staff.

The benefits of membership for all categories includes:

- Access to collaboration with Centre Scientists in related areas of inquiry
- Access to the shared resources of the Centre, and support including administrative assistance with grant preparation and submission
- Access to media and communication support
- Regular information regarding funding and dissemination opportunities, and on-campus activities and seminars



Membership

Centre Scientists



Dr. Beth Murray-Davis

BA, BHSc, MA, PhD, RM

Dr. Beth Murray-Davis is an Associate Professor in the Midwifery Education Program and Department of Obstetrics and Gynecology. Her qualifications include a BA in Sociology (Guelph), a BHSc in Midwifery (McMaster), a MA in Health Profession Education (University of Toronto), and a PhD in Primary Health Care (University of Sheffield). She is a co-PI for a CIHR Clinician Investigator Team Grant examining Non-Communicable Diseases in Obstetrics.

Her current research interests include pregnant peoples' experiences of healthy nutrition and exercise during pregnancy and postpartum, fetal movement awareness, midwifery experiences of caring for complicated pregnancies, client and health care provider experiences of alternative models of practice for midwives, and client decision making about place of birth. Dr. Murray-Davis has worked as a midwife in Hamilton since 2003.



Dr. Elizabeth K. Darling

BArtsSc, BHSc, MSc, PhD

Dr. Liz Darling is a Registered Midwife, Assistant Dean and Director of the Midwifery Education Program, and Associate Professor in the Department of Obstetrics and Gynecology at McMaster University. She is a three-time McMaster alumni (with degrees in Arts & Science, Midwifery, and Health Research Methodology), and has a PhD in Population Health from the University of Ottawa. Liz began her career as a midwife in North York, and then practiced midwifery in Ottawa and was a part-time faculty member with the Midwifery Education Program at Laurentian University prior to joining McMaster full-time in 2017. She is also an Adjunct Scientist at the Institute for Clinical Evaluative Sciences, and holds an Associate appointment in the Department of Health Research Methods, Evidence, and Impact at McMaster University.

She is the principal investigator on a CIHR Early Career Operating Grant in Maternal, Reproductive, Child, and Youth Health. Her current research interests include: the organization of midwifery services, health disparities, access to care, health policy, and perinatal health surveillance. She conducts mixed methods research and has particular expertise in the midwifery data collected in Ontario's perinatal registry (BORN-Ontario).



Prof. Eileen K. Hutton

BScN, MSN, PhD, FCAHS, RM

Prof. Eileen K. Hutton is Professor Emeritus, Department of Obstetrics and Gynecology, McMaster University, Associate Dean Emeritus, Faculty of Health Sciences, and Director Emeritus, Midwifery Education Program, Department of Education. She served as the Assistant Dean for the McMaster Midwifery Education Program from 2007 to 2018, and established the McMaster Midwifery Research Centre in July 2018.

Prof. Hutton held a part time endowed chair position from 2010-15 as Professor of Midwifery Science at Vrije University in Amsterdam, the Netherlands. Her undergraduate degree is from Queen's University, School of Nursing (BNSc) and she holds graduate degrees from the University of Toronto, School of Nursing (MScN) and the Institute of Medical Science - Clinical Epidemiology (PhD). In 2006, Prof. Hutton was recognised by the Society of Obstetricians and Gynaecologists of Canada with a National Award of Excellence for leadership by fostering interprofessional collaboration in support of women's health, and dedication to the advancement of midwifery practice and maternal health in Canada and abroad. She received the inaugural Lifetime Achievement Award by the Association of Ontario Midwives in recognition of her role in education, research and contributions to the profession. In 2016, Prof. Hutton received an Honorary Doctorate from Queen's University recognising her contribution to the development of Canadian Midwifery. In 2017, Prof. Hutton became the first Canadian midwife to be inducted as a Fellow of the Canadian Academy of Health Sciences.

She has published many peer-reviewed papers on a variety of topics relevant to midwifery and obstetrics including twin birth, external cephalic version, late and early clamping of the umbilical cord in term neonates, vaginal birth after caesarean section, sterile water injections for labour pain relief and home birth. Her current work focuses on the intersection of birth and early life exposures and the development of infant gut microbiome.

Adjunct Scientists



Laura Banfield

BSc, MHSc, MLIS

Laura Banfield is an Assistant Clinical Professor in Nursing, Librarian in the Health Sciences Library at McMaster University, and doctoral candidate in the Department of Geography. She works closely with the Midwifery Education Program through teaching library orientation to incoming students and course specific database and research sessions., developing library tools and resources to support learning, and providing one-on-one support. She is an active collaborator and advisor in both student and faculty led research.



Dr. Kirsty Bourret

PhD, RM

Dr. Kirsty Bourret (elle/she/her) is a trained midwife, Fellow at the Karolinska Institute, and was a Francophone faculty member with the Midwifery Education Program at Laurentian University. Kirsty was awarded the prestigious FORTE international postdoctoral fellowship funded through the Swedish Research Council to continue her research on midwife-led person-centered comprehensive abortion care in the Democratic Republic of Congo (DRC). She also received a Mitacs Accelerate fellowship to co-conduct a multi-country, multiple case study to further study midwifery association strengthening.



Elizabeth Brandeis

RM, MScCH

Elizabeth Brandeis is a Registered Midwife and the Senior Project Leader & Labour Relations Specialist with the Association of Ontario Midwives. She has worked as a sessional instructor in the Midwifery Education Program at McMaster University and a lecturer with the Midwifery Education Program at the Toronto Metropolitan University. Her interests include midwifery leadership, health equity, health policy, pay equity, clinical education, interprofessional education, and models of care.

Adjunct Scientists



Dr. Ginny Brunton

RN, RGN, RM, PhD

Dr. Ginny Brunton is an Associate Professor in Nursing at OntarioTech University. Her research focuses on mixed method evidence syntheses and knowledge translation examining policy issues in maternal health. She has particular interests in community engagement, and public health, with particular interests in low risk birth, and in how best to involve communities and other stakeholders in knowledge translation of birth research, evidence-informed maternal health care, mixed methods research synthesis, health policy, health promotion, wellbeing and salutogenesis, the epidemiology of spontaneous birth, interdisciplinary and transdisciplinary working, knowledge translation, and methods of community engagement in health research.



Dr. Elizabeth C. Cates

BScH, BHSc, PhD, RM

Dr. Liz Cates is an Assistant Clinical Professor (Adjunct) in the Department of Pathology & Molecular Medicine, and an Instructor in the Bachelor of Health Sciences Program and the Midwifery Education Program at McMaster University. Her research interests include pedagogy, attrition and retention in the midwifery profession, and infectious diseases.



Abigail Corbin

BSc, BHSc, MHM, RM

Abigail Corbin is the Patient Care Manager for the Alongside Midwifery Unit, Early Discharge Program, Family and Baby Clinic at Oak Valley Health, with research interests in evaluation of midwifery models of care, midwifery leadership and risk management.

Adjunct Scientists



Remi Ejiwunmi

MA, RM

Remi Ejiwunmi is a practicing midwife in Mississauga, Ontario, and Head of the Division of Midwifery at Trillium Health Partners. Remi's research interests include quality improvement, patient-centred care, and system thinking. She worked to create Quality and Practice Councils and participates on the Provincial Obstetrical Quality Improvement and Patient Safety committee and with the Provincial Council for Maternal Child Health's Low Risk Obstetrical Expert Panel. Remi has served as Past President at the Association of Ontario Midwives (AOM) and currently sits on the AOM's Quality Insurance and Risk Management Committee. She is a member of the Board of Directors at the Health Insurance Reciprocal of Canada (HIROC).



Prof. Amiram Gafni

DSc

Prof. Amiram Gafni is a Professor in the Department of Health Research Methods, Evidence, and Impact (HEI) and a member of the Centre for Health Economics and Policy Analysis (CHEPA). In 2011, the World Bank ranked Prof. Gafni as 35th health economics researcher in the world (1st in Canada) based on the volume and impact of his publications. His research interests are in the area of economic evaluation of health care programs (both methods development and empirical applications), modeling of consumers' healthcare behaviour, models of patient-physician decision-making, e.g. shared decision-making, policy analysis and risk and decision analysis in health. He has co-authored several papers with other members of the MMRC.



Prof. Marie Klingberg-Allvin

BScN, PhD, RM

Marie Klingberg-Allvin is a midwife and professor in reproductive health at Karolinska Institutet, Dalarna University and adjunct professor at University of Michigan. Her research interests include global Sexual and Reproductive Health (SRH) research and education in low resource settings, with a focus on task sharing/shifting related to induced abortion, contraceptives and post-abortion care in low resource settings, including in India, Uganda, and Kenya, and with a special focus with Somali refugee experiences of violence and related reproductive health care needs.

Adjunct Scientists



Dr. Derek Lobb

PhD

Dr. Derek Lobb is an Associate Professor in the Department of Obstetrics and Gynecology at McMaster University. His research interests include the retention and success of midwifery students and working midwives, and the physiology of cervical ripening in women and the hormones that are involved.



Dr. Karen Lawford

BScH, BHSc, MA, PhD, RM

Dr. Lawford is an Aboriginal midwife (Namegosibiing, Lac Seul First Nation, Treaty 3), a Registered midwife (Ontario), and Assistant Professor, Department of Gender Studies, Queen's University. Her research focuses on comprehensive, gender-inclusive sexual and reproductive healthcare for Indigenous Peoples with a particular focus on the provision of maternity care for those who live on reserve. Dr. Lawford seeks to identify the barriers to achieving equitable health services for Indigenous Peoples. She was the 2020 Inspire Laureate in Health for her research and policy work on mandatory evacuation for birth. Her research interests also include Maternity care on reserves, Medical evacuation, Midwifery, Indigenous feminist theories and methodologies, Indigenous women and Two Spirit Leadership, Indigenous health and wellness, and Health care. She is affiliated with the Queen's Cultural Studies Interdisciplinary Graduate Program, and holds an Adjunct Research Professor position with the School of Indigenous and Canadian Studies at Carleton University.



Dr. Anne Malott

BScN, MSN, PhD, RM

Dr. Anne Malott is an Associate Professor in the Department of Family Medicine with the Midwifery Education Program at McMaster University and a Registered Midwife. Her research interests include models of maternity care, midwifery and interprofessional education, and wellbeing and weight gain in pregnancy.

Adjunct Scientists



Dr. Cristina A. Mattison

PhD

Dr. Cristina A. Mattison is an Assistant Professor (Part-time) in the Department of Health Research Methods, Evidence, and Impact. Cristina obtained her PhD in Health Policy and MSc in Global Health from McMaster University. She is a health systems and policy researcher that applies this lens to sexual and reproductive health and rights. Specifically, her work focuses on understanding the roles of midwives in health systems, which includes midwifery association strengthening.



Tonya MacDonald

RM, MPH, PhD(c)

Tonya MacDonald is a PhD candidate in the Department of Health Research Methods, Evidence, and Impact at McMaster University, former Master Lecturer in the School of Midwifery at Laurentian University, and current midwifery tutor with the Midwifery Education Program (MEP) at McMaster University. She is also a Registered Midwife since 2004, working mostly in Hamilton and area. Her research interests are in research methods that get at the root of improved maternal/perinatal health specifically in low-and-middle income countries. Tonya is particularly interested in community-based participatory research with youth regarding their lived experiences of maternal/perinatal health in their communities.



Helen McDonald

MHSc, RM

Helen McDonald is an Associate Professor in the Department of Family Medicine with the Midwifery Education Program (MEP) at McMaster University since 1993 before midwifery was regulated in Canada. She has practiced as a registered midwife in Hamilton, and has participated in numerous research studies with the MEP and MMRC. Her research interests include knowledge translation, midwifery and interprofessional education, gestational weight gain, place of birth, intrapartum antibiotics during the intrapartum period, the infant microbiome and models of midwifery care.

Adjunct Scientists



Dr. Patricia McNiven

MSc, PhD, RM

Dr. Patricia McNiven is an Associate Professor in the Department of Family Medicine with the Midwifery Education Program (MEP) at McMaster University since 1993, and is a Registered Midwife in Hamilton. Her research interests include midwifery curriculum design and content analysis, faculty development, assessment of clinical competence and distance problem-based learning, early labour, optimality measurement scale validation in a Canadian context, care provider attitudes, midwifery and interprofessional education, fear of childbirth prior to pregnancy, and place of birth. She is the Editor-in-Chief of the Canadian Journal of Midwifery Research and Practice (CJMRRP), Canada's national, peer-reviewed midwifery journal and the official journal of the Canadian Association of Midwives (CAM).



Dr. Katherine Morrison

MD, FRCPC

Dr. Katherine Morrison is an Associate Professor in the Department of Pediatrics, co-director of MAC-Obesity (Metabolism and Childhood Obesity Research Program), and the co-Director of Centre for Metabolism, Obesity and Diabetes Research at McMaster University. Her research program has three main areas of focus: epidemiological research to examine the population, family and individual level determinants that influence adiposity and cardiovascular risk factors across the childhood lifespan, clinical studies to improve the care of children with health consequences related to obesity, and knowledge translation work through the development and dissemination of clinical practice guidelines for the prevention and management of obesity in youth.



Angela Reitsma

BSc, BHSc, MSc, RM

Angela Reitsma is an Assistant Clinical Professor with the Department of Family Medicine in the Midwifery Education Program at McMaster University, Head of Midwifery Service at St. Joseph's Healthcare, and Registered Midwifery practicing in Hamilton. She completed her Master's in Clinical Epidemiology with the Health Research Methodology program at McMaster. Her research interests are in quality improvement, place of birth, midwifery models of care, and research methods.

Adjunct Scientists



Christine Sandor

BSc, BHSc, MSc, RM

Christine Sandor is a Registered Midwife in Hamilton and an Assistant Clinical Professor with the Department of Family Medicine in the Midwifery Education Program. Christine holds three degrees from McMaster: a BSc in Biology, BHSc in Midwifery, and a Masters in Health Science Education. Her research interests include transition to clinical practice, mentorship, and midwifery education.



Kathi Wilson

BA, BHSc, MSc, RM

Kathi Wilson is an Assistant Professor with the Midwifery Education Program. Her research interests include: impact of electronic health records on the provision of midwifery care (especially in the intrapartum period), on client experience of midwifery care, and on student learning experiences.



Mona Abdel-Fattah

BHSc, MSc, RM

Mona Abdel-Fattah is a Registered Midwife with the Community Midwives of Hamilton and is working on the expanded scope project at Crown Point. She completed the Master of Science Global Health Program at McMaster University exploring social and cultural barriers to accessing midwifery care in Morocco under the mentorship of Dr. Patricia McNiven and Dr. Anne Niec. Mona's research interests are focused on international midwifery.



Erika Arseneau

HBSc, MSc

Prior to coming into midwifery, Erika Arseneau completed a MSc in Health Research Methodology at McMaster (2014). She is a co-recipient of the AOM Early Career Research grant with Samantha Landry and has worked under the mentorship of Dr. Elizabeth Darling to complete a study on polyamorous individuals' experience with pregnancy and birth. Erika's research interests include population and public health, marginalized populations and health services.



Kate Demers

BSc, BHSc, MMid

Kate Demers is an Assistant Professor at McMaster University in the Midwifery Education Program, and a Registered Midwife practicing in Hamilton since 2009. She is the lead midwife at Crown Point Midwifery, which is providing expanded midwifery care model options in the east end of Hamilton. Current research projects include exploring outcomes related to expanded scope in midwifery practice and spread and scale of a midwifery-led alongside birthing unit in the city of Hamilton.

Fellows



Erica Elderhorst

BSc, BHSc, RM

Erica Elderhorst is a Registered Midwife and a graduate of the Health Research Methodology program at McMaster University. Erica was awarded the AOM Career Midwifery Research Grant for a randomized controlled feasibility trial of sodium bicarbonate for the prevention of labour dystocia. She currently resides and works as a Midwife in New Zealand and continues to be active in research.



Meagan Furnivall

BA, BHSc, RM

Meagan Furnivall is a Registered Midwife working in London, and graduated with Master's in Health Science Education at McMaster University. She has active ongoing research studies at London Health Sciences Centre collegially with other obstetricians and anesthesiologists. Some of her research interests include skin-to-skin contact in caesarean section, interprofessional collaboration, and exploring how to teach obstetrical residents and midwifery students how best to engage in decision-making with clients.



Vanessa Hébert

RM, BHSc, MA

Vanessa Hébert is a registered midwife currently pursuing a PhD in the clinical epidemiology stream of the Health Research Methodology (HRM) program at McMaster University. Her doctoral research will explore the effectiveness of oxytocin prophylaxis in reducing the risk of postpartum hemorrhage when labour and birth have been physiologic. Her research interests include midwifery services, health systems and physiologic birth.



Zheng Jing (Jimmy) Hu

BScH, MSc

Jimmy Hu is a PhD candidate in statistics in the Health Research Methodology program at McMaster University, and a biostatistician at Trillium Health Partners. His research interests include developing a safety culture in neonatal intensive care units through multi-pronged complex interventions, and various statistical methods.



Bronte Johnston

BHSc, MSc

Bronte Johnston is a lecturer in the Bachelor of Health Sciences program at McMaster University and a member of the McMaster Education Research, Innovation & Theory (MERIT) Program, with research interests in point of care ultrasound and midwifery training. She is pursuing her PhD at the School of Population and Public Health at the University of British Columbia.



Jenny Knoll

BA BHSc, RM

Jenny Knoll is a graduate of the Midwifery Education Program at McMaster University, and a Registered Midwife working in Hamilton. Jenny has worked in obstetrical research at Mount Sinai Hospital, and sat on the Canadian Association of Midwives' Cannabis Working Group. Her current research interests include alcohol use in pregnancy and expanded scope midwifery practice.

Fellows



Susana Ku

BHSc, RM, MSc

Susana Ku is a Registered Midwife in Ontario, Canada and a PhD candidate in the Global Health Program at McMaster University. Before starting her career in Canada, she obtained her bachelor's degree in Midwifery and obtained a Master's degree in Sexual and Reproductive Health in Peru. She has also performed as a clinical preceptor and Midwifery instructor in the Midwifery education program in Peru and Canada. She is a Committee Member in the Virtual International Day of the Midwife Conference and a member at the Critical Midwifery Studies Collective. Her other main areas of interest include, international midwifery, childbearing and human rights, promotion of equity in health, use of technology for continuing education, provision of quality midwifery care during crisis and choice of birthplace.



Lisa Nussey

RM, BA, BHSc, MSc

Lisa Nussey is a registered midwife in Hamilton. She recently completed a Masters in the Health Research Methods program at McMaster University. She is the founder and co-coordinator of the Hamilton Midwifery Outreach Team (HMOT), a group of volunteer midwives providing low barrier prenatal care to people in the shelter system in Hamilton. She works with the Hamilton Social Medicine Response Team (HAMSMaRT), a grass roots, interdisciplinary health organization providing low barrier health care to people in Hamilton. Lisa's primary areas of interest are community centred care and the social determination of health and social medicine.



Claire Ramlogan-Salanga

RM, BComm, BHSc, MSc

Claire Ramlogan-Salanga is a registered midwife and lecturer with the McMaster Midwifery Education Program. Her leadership positions include Chair of Council at the College of Midwives of Ontario and Chair of the Equity Diversity and Inclusion Committee of the Canadian Midwifery Regulator Council. As part of her commitment to support the midwifery community she co-developed the Canadian IBPOC Peer Review program. Her research interests include health professions education, social justice education reform, intersectional approaches to research design and methodology and health equity.



Emma Seager

BASc, BHSc, MSc, RM

Emma Seager has been a practicing midwife at Access Midwives in Stoney Creek since October 2016, and completed her Master's in Health Science Education at McMaster University. Her research interests include midwifery services, quality improvement, and health science education. Emma's current research project is funded by an AOM Mentored Midwifery research grant that is examining the relationship between cervical dilation on hospital admission and subsequent outcomes, and evaluating the effects of an early labour home assessment.



Association of Ontario Midwives (AOM)

The Association of Ontario Midwives is dedicated to advancing the clinical and professional practice of Indigenous/Aboriginal and Registered Midwives in Ontario.



Canadian Association of Midwives (CAM)

The CAM is the national organization representing midwives and the profession of midwifery in Canada. The mission of CAM is to provide leadership and advocacy for midwifery throughout Canada as an autonomous, self-regulated, publicly funded and vital part of primary maternal and newborn care. CAM promotes the development of the profession in the public interest and contributes the midwifery perspective to the national health policy agenda.

The Baby & Microbiota of the Intestine Project (Baby & Mi): Prof. Eileen Hutton, Principal Investigator

Spotlight

Early life exposures may impact development of the infant gut, i.e. mode of delivery, place of birth, antibiotics, Caesarean section, breastfeeding, diet, and probiotics. The Baby & Mi study compares gut microbiota in full term infants in low-risk pregnancies compared with infants exposed to intrapartum antibiotics for GBS prophylaxis. The Baby & Pre-Mi Study further compares how premature birth and subsequent exposures, i.e. oral feeding at an immature stage, controlled sterile environments, may change how microorganisms develop soon after their birth compared to full term babies. Pilot results reveal that probiotics administered after preterm birth during hospitalization reduced the diversity and prevented persistence of antibiotic resistance genes in the gut microbiome, meriting further exploration. Read more at: <https://pubmed.ncbi.nlm.nih.gov/36008821/>



Scientific Advisory Committee

The Scientific Advisory Committee acts as a critical friend of the Centre in providing expert opinion, advice, and direction on scientific and scholarly priorities.



Prof. Mary Renfrew

BSc, PhD

Professor of Mother and Infant Health School of Nursing and Health Sciences
University of Dundee, Dundee, Scotland



Prof. Karyn Kaufman

RN, CNM, DrP,

Professor Emeritus, Department of Family Medicine
Director Emeritus, Midwifery Education Program
McMaster University, Hamilton, Canada

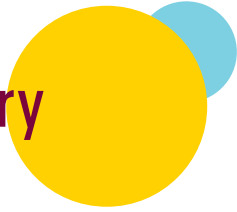


Dr. Michael McGillion

BScN, PhD

Associate Professor, School of Nursing
Assistant Dean, Research, School of Nursing
McMaster University Heart and Stroke Foundation/Michael G. DeGrootte Endowed Chair
of Cardiovascular Nursing Research
McMaster University, Hamilton, Canada
Stepped down from SAC February 2022 - thank you for your service and guidance!

Scientific Advisory Committee



Dr. Lawrence Grierson

PhD

Associate Professor, Department of Family Medicine
Assistant Dean, Health Sciences Education Graduate Program
Scientist, McMaster FHS Program for Education Research,
Innovation & Theory (MERIT)
McMaster University, Hamilton, Canada



Prof. Deborah M. Sloboda

PhD

Professor, Associate Chair Research
Canada Research Chair in Perinatal Programming Farncombe
Family Digestive Health Research Institute Department of
Biochemistry and Biomedical Sciences
McMaster University, Hamilton, Canada



Tonia Occhionero

BHSc, RM

Executive Director, Canadian Association of Midwives



Scientific Advisory Committee



Katie Mackenzie

BSc, MSc, MPH

Year 3 student in Bachelor of Health Sciences in Midwifery Education Program (in progress),
McMaster University, Hamilton, Canada



Patricia Raso

BA, MA

Early Development Instrument (EDI) Coordinator, Offord Centre for Child Studies,
McMaster University, Hamilton, Canada



Emily M. Gillard

BA, BHSc, MA, RM

Registered Midwife with Community Midwives of Hamilton (partner) and Crown
Point Midwives (associate).

Scientific Advisory Committee



Dr. Derelie Mangin

MBChB, DPH

David Braley Chair in Family Medicine, Associate Chair (Research), and Professor in the Department of Family Medicine
McMaster University, Hamilton, Canada



Dr. Elizabeth Alvarez

BS, MD, MPH, PhD, CMCBT

Associate Professor, Public Health, Department of Health Research Methods, Evidence and Impact (HEI)
McMaster University, Hamilton, Canada

Research Staff

Rashid Ahmed Research Manager
BScH, MSc

Lindsay Grenier Research Coordinator
BScH, MA

Katherine Leavey Research Coordinator
PhD

Olivia Marquez Research Coordinator
BSc, BHSc, MSc, RM

Julia Simioni Research Coordinator
BScH, MSc

Bismah Jameel Research Coordinator
BSc, MSc

Emma Ruby Research Assistant
BHSc

Katie MacKenzie Research Assistant
BSc, MSc, MPH

Spotlight

Developing a Canadian consensus statement on gender-inclusive language for reproductive care: Dr. Beth Murray-Davis, Principal Investigator

Transgender, gender non-binary, and Two Spirit individuals are excluded from pregnancy care, sexual health, and family planning care, as well as research and health policy focused on these aspects of reproductive care. This is in part due to the gendered language used by providers, researchers, and health systems. As such, transgender, gender non-binary, and Two Spirit individuals experience worse health outcomes and serious discrimination in reproductive care. At the same time, there is concern regarding the potential erasure of both cisgender and transgender women through the use of gender-neutral language.

In partnership with the Canadian Association of Midwives and the Society of Obstetricians and Gynaecologists of Canada, and funded by the Social Sciences and Humanities Research Council Race, Gender and Diversity Initiative, the aim of our project is to create an evidence-informed, patient-centered Canadian Consensus Statement on gender inclusive language in reproductive care and to develop knowledge translation and mobilization strategies to share it with knowledge users.

Governance & Operations

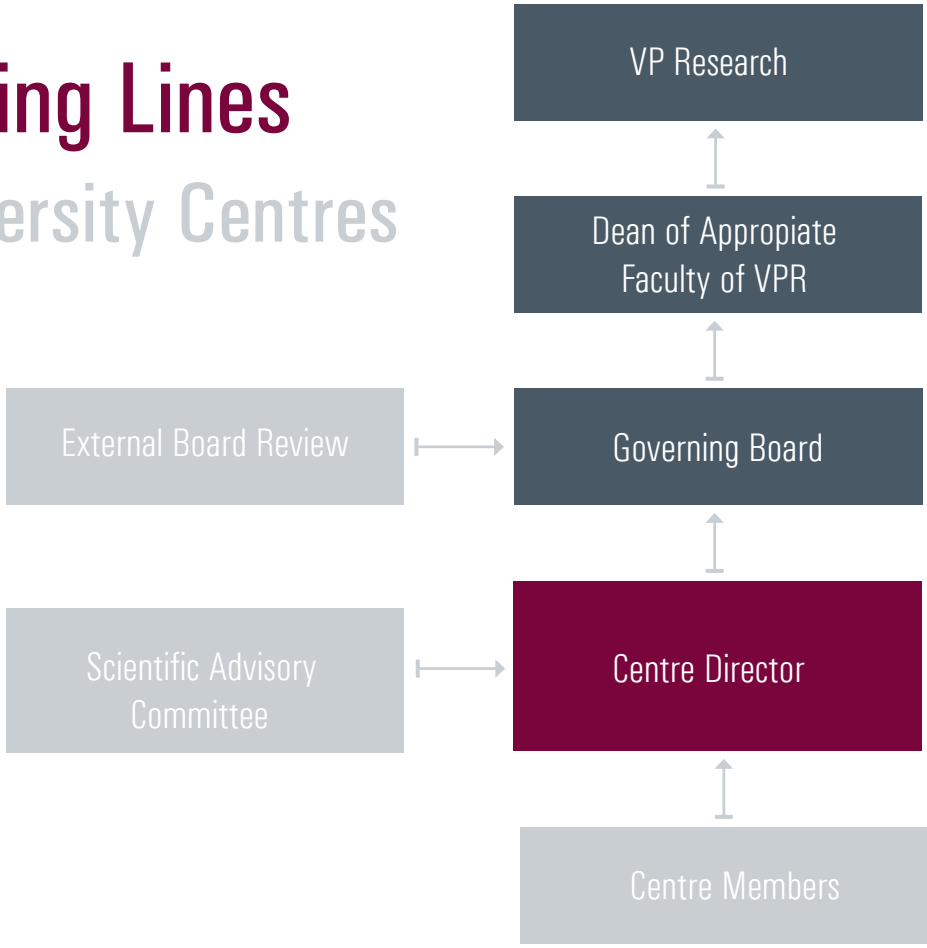
MMRC Scientific Director Dr. Beth Murray-Davis and Research Manager Rashid Ahmed are responsible for the day-to-day operations of and planning for the MMRC, including research and educational activities, centre outreach, and budgeting.


The MMRC Scientific Advisory Committee (SAC) consists of internationally recognized experts in fields related to the centre’s three pillars, as well as community and organizational representatives, who advise the Scientific Director on scientific, scholarly, and community priorities.

The MMRC SAC convenes at least once per year. The MMRC Scientists meet on a quarterly basis to discuss research progress, priorities, and operations. MMRC Scientists and research staff meet monthly to discuss current research projects and plans.

The MMRC reports annually to the Vice-President (Research) and Governing Board of Research Institutes, Centres and Groups at McMaster University according to university policy.

Reporting Lines for University Centres





Building an Academic CV Workshop

Liz Darling, Beth Murray-Davis, Eileen Hutton
MMRC Research Symposium
March 26, 2019



The University Club
of McMaster

Training of highly qualified personnel is essential for increasing research capacity in midwifery. The MMRC is poised to be a central training environment for midwives and other trainees with an interest in maternity care research.

As a training environment, the MMRC offers summer research internships, volunteer opportunities, undergraduate and graduate thesis supervision, guidance and support of MMRC Fellows, research skills workshops, research rounds, writing and research technical support, research symposia, research drop in learning sessions, and MMRC research grants coming soon. The MMRC also supports the new Master of Science in Midwifery program at McMaster, the first in Canada. We also connect trainees with other research resources across McMaster University, including collaborations with other departments, access to research support units, and connections with other Midwifery researchers across Canada.



Education & Training

Education & Training

Trainees

The MMRC has a total of 21 undergraduate, graduate, and post-doctoral trainees supervised by, or affiliated with the grants held by MMRC Scientists Prof. Eileen Hutton, Dr. Beth Murray-Davis, and Dr. Liz Darling.

Name	Academic Program	Project
Ayeshah Haque	Master of Health Sciences in Translational Research	Health equity data collection - a survey of Ontario midwives
Elizabeth Hilsenteger	Bachelor of Health Sciences (Honours)	The Global Midwifery Peer-to-Peer Program
Shikha Ghandi	Bachelor of Life Sciences (Honours)	Identifying strengths and gaps in Canadian midwifery research: A scoping review
Emma Ruby	Bachelor of Health Sciences (Honours)	Gestational diabetes mellitus screening and counselling practices of antenatal healthcare providers in Ontario: exploring the perspectives of patients
Kate Demers	Mentored AOM Research Grant Awardee	Outcomes of midwifery-led early loss clinic
Zeest Kadri	Bachelor of Health Sciences (Honours)	Midwifery care and the health care outcomes of underserved populations
Jeffrey Sun	Bachelor of Health Sciences (Honours)	Sexual and reproductive health care needs of underserved populations
Minuki Wickramasuriya	Bachelor of Life Sciences	Sexual and reproductive health care needs of underserved populations
Nashita Junaid	Bachelor of Arts & Science (Honours)	Midwifery care and the health care needs of underserved populations
Bonny Chong	Bachelor of Integrated Science (Honours)	A scoping review of the sexual and reproductive health care needs of underserved populations
Dr. Cristina Mattison	Postdoctoral Fellow	Evidence-informed and gender transformative midwifery research

Education & Training

Name	Academic Program	Project
Dr. Kirsty Bourret	Postdoctoral Fellow	Evidence-informed and gender transformative midwifery research
Maleeka Munroe	Bachelor of Life Sciences (Honours)	Identifying facilitators and barriers to midwives' mental health
Hannah Faber	Bachelor of Life Sciences	Sexual and reproductive health care needs of underserved populations
Claire Ramlogan-Salanga	Master of Science in Health Science Education	Transforming the Midwifery Education Program through social justice curriculum: a modified Delphi study
Vanessa Hébert	Doctoral Student in Health Research Methodology	Effectiveness of oxytocin prophylaxis in reducing the risk of postpartum hemorrhage when labour and birth have been physiologic
Maleeka Munroe	Master of Science in Global Health	Canada must address Black maternal health disparities
Erika Campbell	Doctoral Student in Global Health	Decolonizing maternity care in Ontario: mapping evacuation birth policy and examining the provision of anti-oppressive care for First Nations Peoples birthing outside of their communities
Susanna Ku	Doctoral Student in Global Health	Understanding the impacts of the COVID-19 pandemic on midwifery services in Ontario, Canada and Lima, Peru: A comparative case study
Dr. Laura Schummers	Postdoctoral Fellow	The CART Mife-Outcomes study: Relating Canada's unique mifepristone regulations to health system events, costs and access to abortion, using linked health administrative data
Dr. Erin Hetherington	Postdoctoral Fellow	The CART PREG-Epi Study: Pandemic Reproductive health and health Equity-Guidance from Epidemiology to improve reproductive, perinatal, and maternal mental health and substance use care

Education & Training

Spotlight

Evidence-informed and gender transformative midwifery research: Dr. Kirsty Bourret and Dr. Cristina Mattison, Principal Investigators



As post-doctoral fellows at the MMRC, Kirsty Bourret and Cristina Mattison have spent the last three years building a research program in partnership with the Canadian Association of Midwives (CAM) broadly focused on supporting midwives' roles in health systems to increase access to sexual and reproductive health and rights (SRHR), both in Canada and globally.

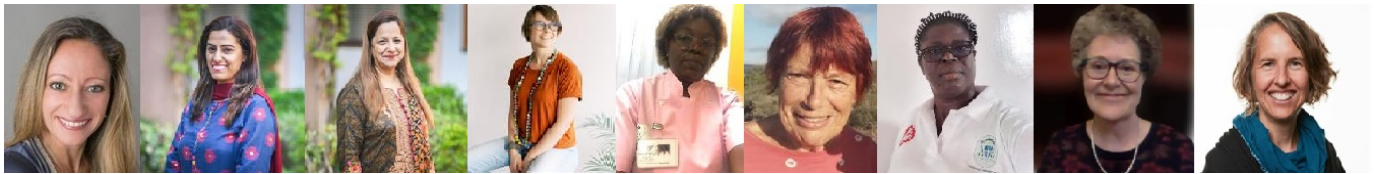
In 2019, they began work on a Mitacs Accelerate internship, partnered with CAM's global division, to conduct a bilingual, multi-country, mixed methods study, focused on health professional association strengthening and in-service midwifery education. Outputs of this recently published research in [BMJ Global Health](#) include an evidence-informed theoretical framework and checklist that provides a road map and foundation for understanding the main elements required to build sustainable midwifery associations. The impacts of these findings were recognized by Global Affairs Canada, where they produced a [policy brief](#) to ground the Feminist International Assistance Policy in their research evidence on investing in midwifery associations to improve gender equality and reducing maternal and newborn mortality and morbidity.

Building on this work, they embarked on a second Mitacs Accelerate internships in 2021 exploring the contextual relevance of their theoretical framework from the first study, and expanding the evidence for, and CAM's knowledge of, best practices in midwifery association strengthening. This multiple-case study is focused on five health systems: 1) three health systems in Canada with varying degrees of midwifery integration (Alberta, Nova Scotia, and Newfoundland and Labrador); 2) Puntland State of Somalia, where CAM has recently partnered with the local association for the Strengthening Midwifery Education and Practice in Somalia project; and 3) the Democratic Republic of Congo where CAM has been engaged in midwifery projects since 2015. Their collaborative approach means that the research is guided by a research consortium that consists of context-specific midwifery association leadership, practicing midwives, midwifery consumers, midwifery students, and CAM staff. Their research inquiry is driven by the knowledge users themselves and findings are vetted by the consortium, in an integrated knowledge translation approach.

Events

McMaster Midwifery Research Centre Research Symposium 2022



The MMRC presented its sixth Research Symposium online from Monday, March 28 to Friday, April 1, 2022, that included 1 student research showcase, 2 panel discussions, 3 keynote lectures, 4 research showcases, 5 days of presentations, and 6 student research posters. A total of 31 speakers and 170 symposium participants joined us from 65 cities across Canada and from 28 countries. A panel discussion, "Finding out what matters to us: The importance of Indigenous-led midwifery research for improving health and well-being" was co-hosted with the National Aboriginal Council of Midwives (NACM), and a second panel discussion, "Global perspectives on the role of midwives in safe abortion care" was co-hosted with the Global Network of WHO Collaborating Centers for Nursing & Midwifery (GNWHOCC) Midwifery Network. Videos of presentations are available to view online at: <https://mmrc.mcmaster.ca/event/mmrc-research-symposia/new-2022-research-symposium/>. Join us in spring 2023 for our next Research Symposium!



MMRC Midwifery Research Symposium
Programme March 28 - April 1, 2022
1200-1330h EST (1600h GMT) Daily

JOIN US for online forum for primary maternity care providers and researchers, including midwives, physicians, nurses, and students, where current and innovative research topics relevant to clinical practice will be presented and discussed.

FREE! REGISTRATION REQUIRED: <https://tinyurl.com/3z6a5vxx>

	Monday, March 28	Tuesday, March 29	Wednesday, March 30	Thursday, March 31	Friday, April 1
1200h	Welcome	Welcome	Welcome	Welcome	Welcome
1205-1240h	<p>Keynote Speaker</p> <p>Perinatal outcomes of planned home birth after cesarean and planned hospital vaginal birth after cesarean at term gestation in British Columbia</p> <p>Dr. Hamideh Bayrampour</p>	<p>Panel Discussion Co-hosted with the National Aboriginal Council of Midwives (NACM)</p>  <p>Finding out what matters to us: The importance of Indigenous-led midwifery research for improving health and well-being</p> <p>Claire Dion Fletcher (moderator), with Cherylee Bourgeois Carol Couchie Dr. Karen Lawford Dr. Jennifer Leason</p>	<p>Panel Discussion Co-hosted with the Global Network of WHO Collaborating Centers for Nursing & Midwifery (GNWHOCC) Midwifery Network Webinar</p>  <p>Global perspectives on the role of midwives in safe abortion care</p> <p>Dr. Liz Darling (moderator), with Marina Baig, Arusa Lakhani, Cristina Alonso, Alixandra Bacon, Justine Mekui, Marijke Alblas, Aimée Patricia Ndembu</p>	<p>Keynote Speaker</p> <p>Safety of forceps and vacuum birth in Canada: From inter-hospital to international perspectives</p> <p>Dr. Giulia Muraca</p>	<p>Keynote Speaker</p> <p>Should all pregnant individuals be induced at 39 weeks of gestation?</p> <p>Dr. Rohan D'Souza</p>
1240-1300h	<p>MMRC Research Showcase</p> <p>Ontario midwives' mental wellbeing: a mixed methods study of barriers and facilitators</p> <p>Dr. Liz Darling</p>			<p>MMRC Research Showcase</p> <p>Making space for midwifery in the hospital: Exploring the birth environment of Canada's first Alongside Midwifery Unit</p> <p>Dr. Beth Murray-Davis</p>	<p>Clinical Practice Showcase:</p> <p>Framework for a midwifery-led implementation of oxytocin training</p> <p>Katelyn Fisher, Lauren Columbus, Meagan Furnivall</p>
1300-1330h	<p>MMRC Student Showcase</p> <p>Responsibility and justice: Considerations for increasing access to prenatal care</p> <p>Lisa Nussey</p>			<p>MMRC Research Showcase</p> <p>Capturing antibiotic resistance genes in the gut microbiome reveals new benefits of probiotic supplementation in preterm infants</p> <p>Allison Guiton</p>	<p>Closing Remarks & Poster Award</p> <p>Dr. Beth Murray-Davis</p>
1330-1400h				<p>Student Poster Presentations</p>	

More info & student posters: <https://mmrc.mcmaster.ca/2022-research-symposium>. Presentations online after symposium. Follow us @macmidwifery  



Education & Training

McMaster Midwifery Research Centre Research Symposium 2020

As with many other events during the Covid pandemic, the MMRC pivoted to host its annual Research Symposium online daily from Monday, October 26 to Friday, October 30, 2020. Over 100 people joined to watch 3 keynote speakers, 2 panel workshops, 3 research showcases, 6 students posters, and 5 student rapid fire round presentations. A panel discussion on "Clinicians' and Students' Experiences During Covid" and "Emerging Models of Midwifery Care" garnered great interest among midwifery researchers, community midwives, midwifery undergraduate students, and allied professionals, as did presentations on experiences of racism in midwifery, cannabis use during pregnancy and lactation, midwifery retention, access to midwifery care in Canada, and the strengthening of midwifery professional associations. All video presentation and posters are available online at: <https://mmrc.mcmaster.ca/event/mmrc-research-symposia/2020-research-symposium/>

Student Research Poster Presentation Q&A
Oct 28, 2020, 13:00

MMRC Midwifery Research Symposium presents...

Maisha Ahmed, Midwifery Student
The Built Environment and Design Lessons (BEDLESS): Exploring the Impact of the Built Environment at the Markham Stouffville Hospital Alongside Midwifery Unit

Aisha Jansen, Midwifery Student
Economic evaluations of interventions for underserved pregnant people and new parents: A scoping review

Abdullah Haroon, Medical Student
Improving Family Planning & Reproductive Care Outcomes for Women in Pakistan

McMaster University | Midwifery Research Centre

McMaster Midwifery Research Symposium

SAVE THE DATES!
 Online Daily

Keynote Speaker Topics:

- Canadian Midwifery Retention Study
- Experiences of Racism in Midwifery
- Cannabis Use During Pregnancy and Lactation

Panel Discussion:

Access of Midwifery Care

Rapid Fire Talks:

Experiences of Midwives & COVID-19
 Maternal Research

Program and links, go to mmrc@mcmaster.ca, [macmidwifery](https://macmidwifery.com)

MMRC Midwifery Research Symposium Programme - October 26-30, 2020



JOIN US for online forum for primary maternity care providers and researchers, including midwives, physicians, nurses, and students, where current and innovative research topics relevant to clinical practice will be presented and discussed.

FREE PRE-REGISTRATION REQUIRED: <https://mcmaster.zoom.us/j/9cqd-yqqD8sGdYmsF-u6YugDTR8iuVlnuN>
 Full symposium programme at: <https://mmrc.mcmaster.ca/2020-research-symposium>

	Monday, October 26	Tuesday, October 27	Wednesday, October 28	Thursday, October 29	Friday, October 30
1200h	Welcome Dr. Beth Murray-Davis	Welcome Dr. Liz Darling (Moderator)	Welcome Dr. Beth Murray-Davis	Welcome Dr. Anne Malott	Welcome Dr. Beth Murray-Davis
1205-1240h	Keynote Speaker <i>A New Approach To Studying Retention: Following The Professional Journey Of Midwives In Canada</i> Dr. Farimah Hakem Zadeh	Panel Discussion <i>Emerging Models Of Midwifery Care</i> Kate Demers, Crown Point Midwives Shezeen Suleman, MATCH Natalie Kirby, CGMH Well-Baby Outpatient Program	Keynote Speakers <i>Experiences of Racism In Midwifery</i> Feben Aseffa and Lwam Mehari, Association of Ontario Midwives	Keynote Speaker <i>Experiences, Beliefs, And Opinions Of Pregnant People And Their Partners Considering Using Cannabis During Pregnancy And Lactation</i> Dr. Meredith Vanstone	Rapid Fire Rounds (1205-1225h) <i>Student Research</i> Meagan Furnivall Bronte Johnston Angel Najjar Touka Shamkhi
1240-1300h	MMRC Research Showcase <i>Improving Access To Midwifery Care In Canada: Research Insights To Shape The Future</i> Dr. Liz Darling	MMRC Research Showcase <i>Strengthening Midwifery Professional Associations</i> Dr. Cristina Mattison	MMRC Research Showcase <i>Client Experiences Of The Alongside Midwifery Unit At Markham Stouffville Hospital</i> Dr. Beth Murray-Davis	Workshop (1230-1330h) <i>Clinicians' & Students' Experiences During COVID</i> Remi Ejwunmi (Facilitator) Maimoonah Ali, Recent Graduate, McMaster Midwifery Education Program Marie-Pierre Tendland-Frenette, Community Midwives of Hamilton Christie Lockhart, Michael Garron Hospital	
1300-1330h			Student Research Poster Presentations Q&A		Dr. Jon Barrett, Sunnybrook Research Institute Julie Toole, Association of Ontario Midwives

More info: mmrc@mcmaster.ca

Presentations will be available online after symposium

macmidwifery  



Research Rounds and Workshops

Six research workshops and presentations were held for researchers, faculty, staff, midwifery and other undergraduate students to help develop research interest and skills in midwifery, including:

1. Dr. Julia Abelson – Principles for Public and Patient Engagement , Tuesday, March 30th, 2021
2. Dr. Kirsty Bourret – Midwives's integration of manual vacuum aspiration for post-abortion care in the Democratic Republic of Congo Friday, February 12th, 2021
3. Riley Easterbrook – Gender and Sexuality Inclusivity in Research - Tuesday, September 29th, 2020
4. Megan Furnivall – Decision Making Midwifery Students and Obstetrical- Wednesday, July 15th, 2020 Residents Learning, Understanding, and Application of Shared
5. Jimmy Hu – Statistical Approaches to Describing and Analysing Likert Scale Data - Tuesday, May 26th, 2020
6. Dr. Beth Murray-Davis, Carol Bernacci, Bronte Johnston – Tuesday, May 5th, 2020 Development of a Point of Care Ultrasound (POCUS) Course for Midwives

MMRC Research Lunch & Learn Drop-In

The MMRC qdbdludr many requests eqn I those with research questions, need for advice, and to discuss topics of interest and how to navigate the research world at McMaster and in the research community at-large.

Hm qdronmrd+ sgd MMRC gnrsr ` Research Lunch Drop-In rdrrrhnm nm sgd fourth Wednesday of every month enq `mxnmd sn chrbr r any research-related questions, including:

- Grant opportunities
- McMaster research administration process
- Ethics questions and applications
- Potential collaborations, connections, and linkages
- How to write a study protocol, participant informed consent forms, and grant applications
- Study participant recruitment challenges and strategies
- Study-specific questions on quantitative and qualitative methods and advice
- Analysis queries and research support at McMaster
- Research skills development, available workshops, and resources
- The general research environment
- Graduate school, research internships, and volunteer opportunities
- Potential research supervisors
- Hot research topics of the day

Watch all of our research rounds, workshops, and symposia presentation videos at: <https://mmrc.mcmaster.ca/event/>

McMaster Midwifery Research Foundation Grant Program

Established in 2014 by an anonymous donor, the McMaster Midwifery Research Fund (MMRF) is designed to support research in the field of midwifery at McMaster University and to help build research capacity and translate knowledge in the field.

In late 2022, the MMRC will be offering an early career, a graduate, and two undergraduate research grants through a peer reviewed and competitive process. Eligibility, amounts, an application form, and grant details will be available on the grant page of our website, as well as other grant opportunities available in the broader research world relevant to midwifery, at <https://mmrc.mcmaster.ca/research/mmrc-research-grant-program/>.

Value for Money: A mixed methods study to investigate the impact of funding expanded midwifery care models in Canada:
Dr. Liz Darling, Principal Investigator



Spotlight

Midwifery services have the potential to decrease the economic burden of birth on healthcare systems within Canada. Most midwives in Canada work in midwife-led continuity models which yield excellent clinical outcomes and patient satisfaction. However, existing models have limited how midwives can address sexual and reproductive healthcare gaps. This research is assessing the value for money of alternative funding mechanisms introduced in Ontario in 2018 to support new midwifery care models. The project involves assessing the costs and consequences of a novel alongside midwifery unit; exploring what patients, healthcare providers, administrators, and policymakers see as value of new midwifery models; and developing a framework to examine the potential cost savings of midwifery services that meet the needs of people at risk of poor access to health care.

Honours and Awards

2022 Outstanding Achievement Awards

Congratulations to MMRC Fellows **Susana Ku & Claire Ramlogan-Salanga** for each winning an Outstanding Achievement Award at the 2022 McMaster Faculty of Health Sciences Graduate Students' Awards Celebration!

Health Sciences Graduate Student Association Impact Award

MMRC Fellow **Lisa Nussey** was awarded the Health Sciences Graduate Student Association Impact Award at the 2022 McMaster FHS Graduate Students' Awards Celebration for their thesis "Responsibility and Justice: Considerations for Increasing Access to Prenatal Care. An Interpretive Descriptive Study of Health and Service Providers Understandings of Inadequate Prenatal Care in Hamilton" <https://macsphere.mcmaster.ca/handle/11375/27502>.

2021-2022 Graduating Student Achievement Award

MMRC Fellow **Bronte Johnston** was awarded the McMaster MSc Health Science Education Graduating Student Achievement Award for graduating in the top 10 of students based on grade averages in 2021-22. Congratulations!

2021 Outstanding Achievement Award

Congratulations to MMRC Fellow **Claire Ramlogan-Salanga** for winning a MSc Health Sciences Education Outstanding Achievement Award at the 2021 McMaster Faculty of Health Sciences Plenary!

Association of Ontario Midwives' 2021 Excellence in Midwifery Research Award

MMRC Adjunct Scientist **Dr. Cristina Mattison** was awarded the 2021 Association of Ontario Midwives Excellence in Midwifery Research Award for their publication entitled "A critical interpretive synthesis of the roles of midwives in health systems".

Women of Distinction Community Champion Award, Hamilton

MMRC Fellow **Lisa Nussey** was awarded the 2021 Women of Distinction Community Champion Award for Hamilton. This award celebrates women and girls who act as trailblazers for building the Hamilton and Halton community. What an incredible honour!

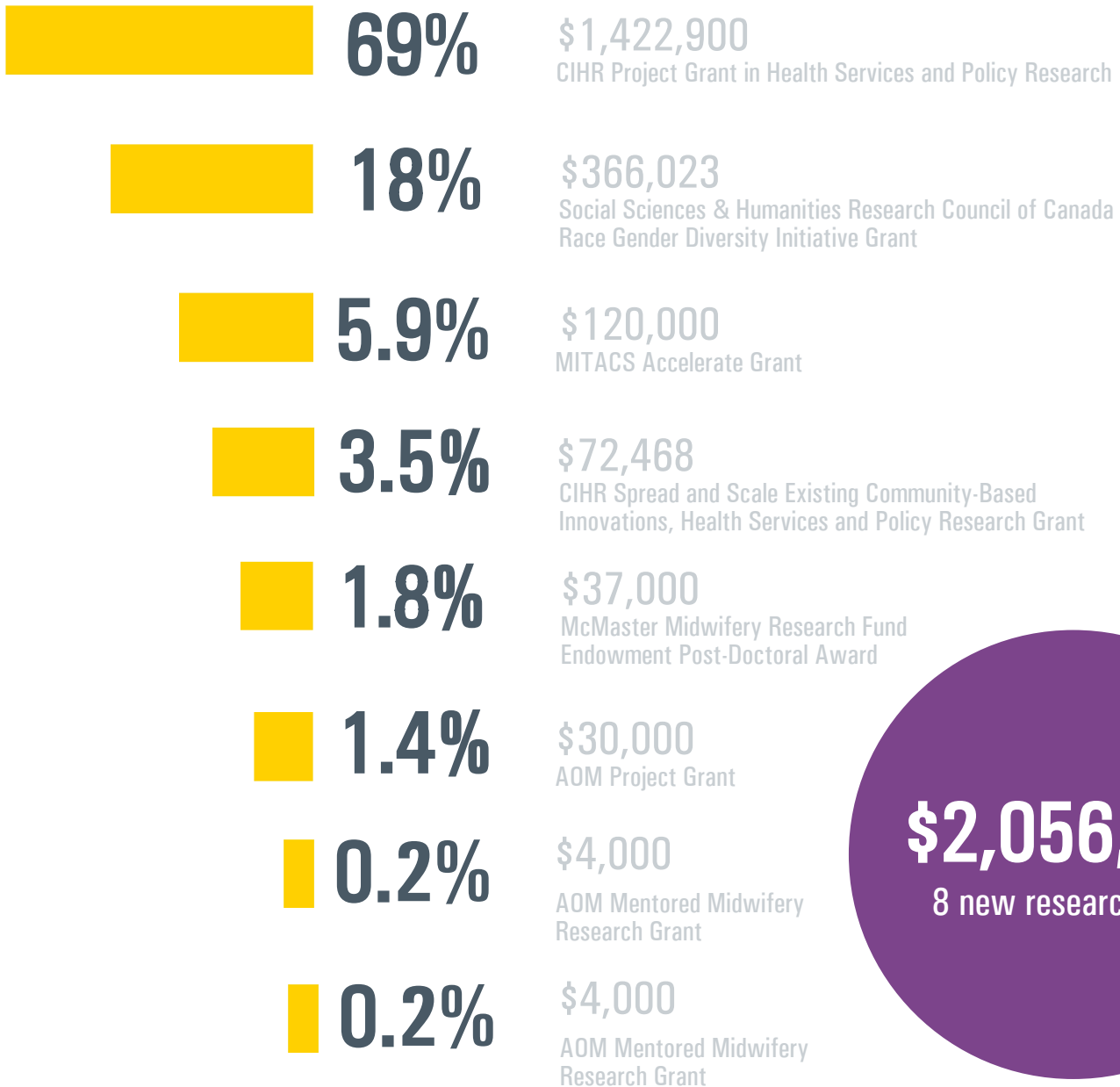


Financial Status

Financial Status

New Research Grants Awarded

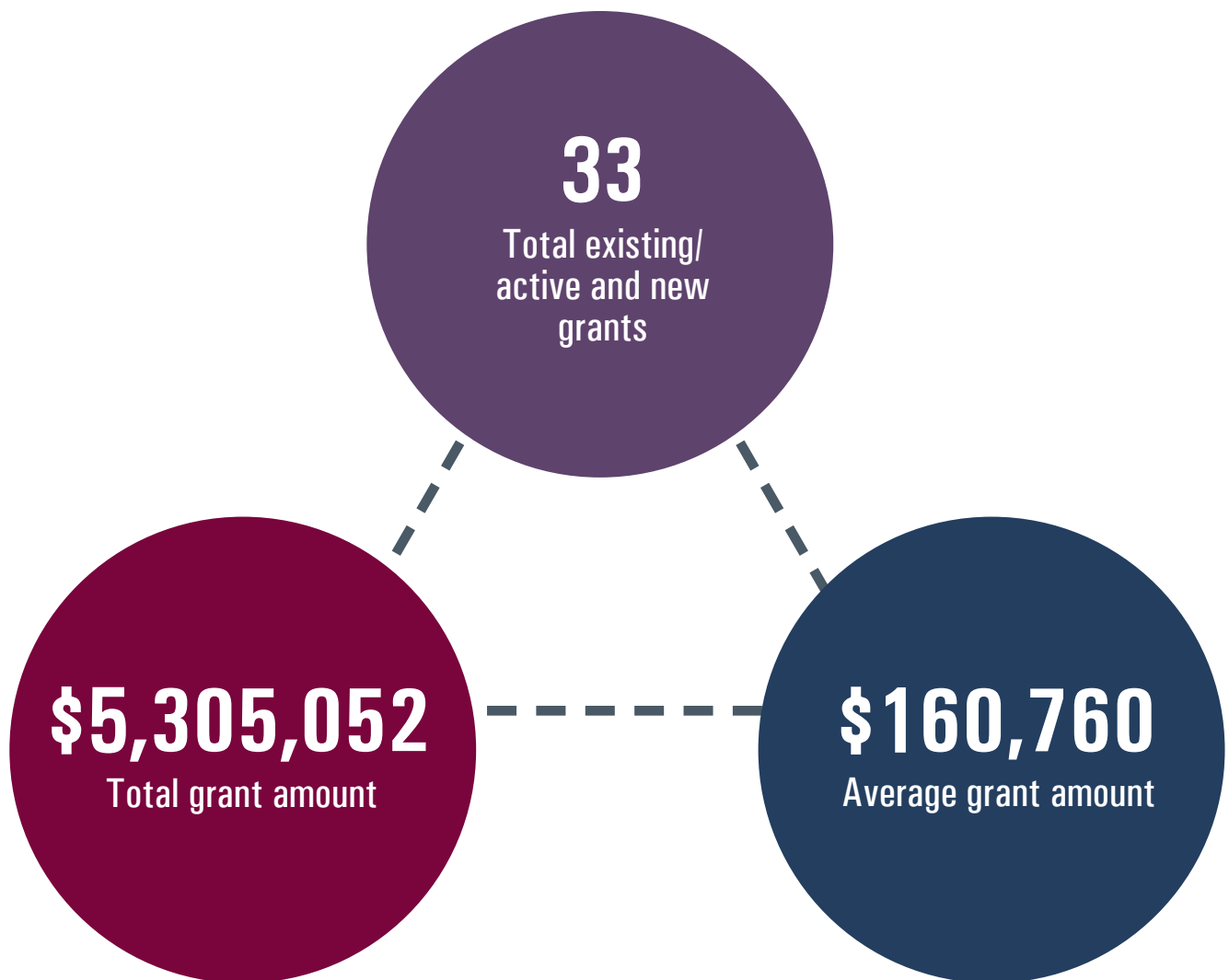
Jan 2020 to June 2022



\$2,056,391
8 new research grants

Existing/Active and New Grants

Jan 2020 to June 2022



Financial Status

Principal Investigators	Study	Granting Agency	Award Date	Years	Total Amount
Dr. Beth Murray-Davis	Developing a Canadian consensus statement on gender inclusive language in reproductive care	Social Sciences & Humanities Research Council of Canada Race Gender Diversity Initiative Grant	Apr 2022	3	\$366,023
Dr. Liz Darling	Expanding midwifery services in Canada: Improving equitable access to sexual and reproductive healthcare through midwifery contributions	CIHR Project Grant	Apr 2022	4	\$1,422,900
Dr. Liz Darling	'Setting the stage': Lyme and pregnancy research grant proposal development	DH Falle Family Foundation	Aug 2021	1	\$9,800
Abigail Corbin, Claire Ramlogan-Salanga	Where are the midwife leaders? A pan-Canadian cross-sectional survey	Association of Ontario Midwives Mentored Midwifery Research Grant	April 2021	1	\$4,000
Dr. Beth Murray-Davis, Ayesha Haque	Health equity data collection: An exploration of midwives perceptions and experiences of health equity and data collection	Association of Ontario Midwives Mentored Midwifery Research Grant	Apr 2021	1.5	\$4,000
Dr. Kirsty Bourret, Prof. Karyn Kaufman	Building sustainable midwifery associations: Application of an evidence informed framework for midwifery professional association strengthening	McMaster Midwifery Research Fund – Post-Doctoral Award	Mar 2021	1.5	\$37,000

Financial Status

Principal Investigators	Study	Granting Agency	Award Date	Years	Total Amount
Dr. Cristina Mattison, Dr. Kirsty Bourret, Dr. Liz Darling, Dr. Beth Murray-Davis, Prof. Karyn Kaufman	Building sustainable midwifery associations: Application of an evidence informed framework for midwifery professional association strengthening	MITACS Accelerate	Mar 2021	2	\$120,000
Dr. Cristina Mattison, Dr. Kirsty Bourret	Grounding the Feminist International Assistance Policy in evidence to improve sexual and reproductive health and rights in partnership with Canadian Association of Midwives	2020 International Policy Ideas Challenge. Global Affairs Canada and Social Sciences and Humanities Research Council (SSHRC)	June 2020	0.5	\$4,000
Dr. Liz Darling	Identifying facilitators and barriers to midwives' mental health	Association of Ontario Midwives	Apr 2020	3	\$30,000
Dr. Liz Darling, Angela Reitsma	Outcomes associated with planned place of birth among women with low-risk pregnancies: 2012-18 update	Association of Ontario Midwives Career Midwifery Research Grant	Apr 2020	3	\$35,040
Dr. Beth Murray-Davis	Spreading the alongside midwifery-led unit to strengthen midwifery care in Hamilton Ontario	CIHR Spread and Scale Existing Community-Based Innovations, Health Services and Policy Research Grant	Mar 2020	3	\$72,468
Kate Demers, Dr. Liz Darling	Outcomes of midwifery-led early loss clinic	Association of Ontario Midwives Mentored Midwifery Research Grant	Dec 2019	1.5	\$4,000
Dr. Beth Murray-Davis, Dr. Liz Darling, Prof. Eileen K. Hutton	Developing a Canadian strategy to identify and prioritize midwifery research capacity and knowledge translation	CIHR Planning and Dissemination Grant, Institute Community Support	Dec 2019	3	\$19,368

Financial Status

Principal Investigators	Study	Granting Agency	Award Date	Years	Total Amount
Dr. Liz Darling, Louise Aerts, Dr. Cristina Mattison	Planning to create partnerships and advance research to understand system-level opportunities to expand midwives' contributions to improve access to sexual and reproductive health care	CIHR Planning and Dissemination Grant, Institute Community Support	Dec 2019	3	\$20,000
Dr. Liz Darling	Value for money: a mixed methods study to investigate the impact of funding expanded midwifery care models in Canada	CIHR Early Career Investigator Award in Maternal, Reproductive, Child & Youth Health	Dec 2019	6	\$108,650
Dr. Liz Darling	Value for money: a mixed methods study to investigate the impact of funding expanded midwifery care models in Canada	Department of Obstetrics and Gynecology, McMaster University	Dec 2019	3	\$105,000
Dr. Beth Murray-Davis	Be Healthy In Pregnancy Knowledge Translation (BHIP-KT)	McMaster University Midwifery Education Program	Oct 2019	3	\$38,749
Dr. Cristina Mattison, Dr. Liz Darling	The integration of midwifery services in Canadian health systems	McMaster Midwifery Research Fund Endowment Post-Doctoral Award	Aug 2019	3	\$106,500
Dr. Liz Darling, Dr. Cristina Mattison, Dr. Kirsty Bourret	Evaluating skill transfer between Canadian and global south midwifery associations	MITACS Accelerate Grant; Canadian Association of Midwives	Aug 2019	1	\$75,000
Dr. Beth Murray-Davis	Gestational diabetes screening practices among antenatal health care providers in Ontario	Teresa Cascioli Charitable Foundation Research Award in Women's Health, St. Joseph's Research Centre	Jul 2019	1	\$100,000

Financial Status

Principal Investigators	Study	Granting Agency	Award Date	Years	Total Amount
Dr. Cristina Mattison, Dr. Liz Darling	Building sustainable midwifery associations: Application of an evidence informed framework for midwifery professional association strengthening	McMaster Midwifery Research Fund – Post Doctoral Award	May 2019	3.5	\$149,900
Dr. Liz Darling	Outcomes associated with planned place of birth in low-risk women attended by midwives in Ontario, Canada, 2009-2012	Association of Ontario Midwives Established Career Midwifery Research Grant	Apr 2019	2	\$14,313
Emma Seager, Dr. Liz Darling	Cervical dilation on hospital admission: supporting best practices to achieve a vaginal delivery	Association of Ontario Midwives Early Career Mentored Midwifery Research Grant	Apr 2019	4	\$5,000
Erica Elderhorst, Prof. Eileen Hutton, Dr. Liz Darling	A randomised controlled feasibility trial of sodium bicarbonate for the prevention of labour dystocia	Association of Ontario Midwives Established Career Midwifery Research Grant	Apr 2019	3	\$29,957
Dr. Beth Murray-Davis	Ontario Midwifery Research Initiative	McMaster University Faculty of Health Sciences Seed Funding for MMRC	Jul 2018	3	\$135,000

Financial Status

Principal Investigators	Study	Granting Agency	Award Date	Years	Total Amount
Dr. Beth Murray-Davis	Gestational diabetes, obesity and hypertension in the midwifery population – best practices	Association of Ontario Midwives Established Career Midwifery Research Grant	Apr 2018	2	\$30,529
Dr. Liz Darling	Exploring equitable access to midwifery care for people of low socio-economic status: facilitators and barriers	Association of Ontario Midwives, Established Career Midwifery Research Grant	Apr 2018	2	\$40,000
Dr. Liz Darling	Midwife to obstetrician consultation and transfer of care: Are we making optimal use of maternity care health human resources	Department of Obstetrics and Gynecology, McMaster University Research Start-Up Funding	Jul 2017	5	\$240,000
Prof. Eileen Hutton, Dr. Beth Murray-Davis, Dr. Liz Darling	Evaluation of the Markham-Stouffville Alongside Midwifery Unit Program Evaluation	Ontario Midwifery Program (OMP), Ministry of Health and Long Term Care (MOHLTC) and Markham-Stouffville Hospital	May 2017	5	\$150,000

Financial Status

Principal Investigators	Study	Granting Agency	Award Date	Years	Total Amount
Dr. Beth Murray-Davis	Improving quality of care and maternal-infant outcomes through an obstetrical research network	Canadian Institutes of Health Research, Institute of Human Development, Child and Youth Health, Team Grant: Clinician-Investigator Teams in Obstetrics & Maternal-Fetal Medicine	Apr 2016	5	\$281,741
Prof. Eileen Hutton	From infancy to childhood: the intersection of gastrointestinal microbial communities, diet and health (GI-MDH)	Canadian Institutes of Health Research, Institute of Human Development, Child and Youth Health, Team Grant: Intestinal Microbiomics/ European Union Joint Programming Initiative – A Health Diet for a Healthy Life (JPI-HDHL)	Jan 2016	6	\$449,510
Dr. Beth Murray-Davis	Be Healthy In Pregnancy: Understanding women’s perceptions of nutrition, exercise and weight gain in pregnancy (BHIP)	Hamilton Health Sciences Early Career Award	Jan 2015	4.5	\$150,000
Prof. Eileen Hutton	The Baby & Microbiota of the Intestine Project (Baby & Mi)	Canadian Institutes of Health Research, Institute of Human Development, Child and Youth Health, Operating Grant	Oct 2014	7	\$946,604



Research Productivity



Collaborations With Other Principal Investigators

"Evaluating a culturally appropriate question prompt tool about heart disease risk and prevention after hypertensive pregnancy"

Principal Investigator(s): Dr. Anna Gagliardi,
Dr. Kara Nerenberg
MMRC Member(s) Involved: Dr. Beth Murray-Davis

"The Art of Creation Study"

Principal Investigator(s): Dr. Deborah Sloboda MMRC
Member(s) Involved: Dr. Beth Murray-Davis

"Encouraging informed decisions about cannabis use in pregnancy: educational needs of women and prenatal care providers"

Principal Investigator(s): Dr. Meredith Vanstone MMRC
Member(s) Involved: Dr. Beth Murray-Davis, Dr. Liz Darling

Principal Investigator(s): Dr. Wendy Peterson
MMRC Member(s) Involved: Dr. Liz Darling

Principal Investigator(s): Dr. Rohan D'Souza
MMRC Member(s) Involved: Dr. Beth Murray-Davis

"Improving Maternity Outcomes by Engaging Stakeholders in a Holistic Assessment of the Social and Clinical Determinants of Severe Maternal Morbidity in Canada"

"The CART PREG Epi Study: Pandemic Reproductive Health and Health Equity – Guidance from Epidemiology to improve mental health and substance use"

"Planning for home birth knowledge mobilization: a scoping review and stakeholder consultation"

"The Montfort Postnatal Care at Home Program: How do health outcomes, costs, patient and provider experiences compare with usual hospital-based postnatal care?"

Research Productivity

"Racial/Ethnic disparities in postpartum hemorrhage in Canada"

Principal Investigator(s): Dr. Dustin Costescu
MMRC Member(s) Involved: Dr. Liz Darling

Principal Investigator(s): Dr. Meredith Vanstone, Dr. Devon Greyson
MMRC Member(s) Involved: Dr. Liz Darling

"How do perceptions of Covid-19 risk influence health decisions in pregnancy? A mixed-methods study"

"Encouraging vaccine confidence among pregnant and breastfeeding Canadians"

Principal Investigator(s): Dr. Jon Barrett
MMRC Member(s) Involved: Dr. Liz Darling

Principal Investigator(s): Dr. Jon Barrett, Dr. Rohan D'Souza
MMRC Member(s) Involved: Dr. Liz Darling

"Supporting Canadian Health Service Users with Decision-Making on COVID-19 vaccination during pregnancy and lactation"

"Assessing the Economic Costs of Obstetric Evacuation and Outcomes/ Experiences of Indigenous Midwifery in Urban, Rural and Remote Indigenous Communities"

Principal Investigator(s): Claire Dion Fletcher, Dr. Ava John-Baptiste, Dr. Jennifer Leason, Chaneesa Ryan
MMRC Member(s) Involved: Dr. Liz Darling

Principal Investigator(s): Dr. Mihir Bhatt
MMRC Member(s) Involved: Dr. Liz Darling

"Comprehensive assessment of delivery-associated adverse outcomes in newborns with inherited bleeding disorders and their mothers"

"Q-Methodology: A Revolutionary Approach to Course Evaluation"

Principal Investigator(s): Dr. Noori Akhtar-Danesh
MMRC Member(s) Involved: Dr. Liz Darling

Principal Investigator(s): Dr. Regina Renner
MMRC Member(s) Involved: Dr. Liz Darling

"The Canadian Surgical and Medical Abortion Provider Survey (CAPS)"

Principal Investigator(s): Dr. Wendy Norman, Dr. Bonnie J.F. Henry, Dr. Kimberlyn Marie McGrail

MMRC Member(s) Involved: Dr. Liz Darling

"The CART Mife-Outcomes study: Relating Canada's unique mifepristone regulations to health system events, costs and access to abortion, using linked health administrative data"

Centre Scientist Peer Reviewed Publications

Jan 2020 to June 2022

71 publications by Prof. Eileen K. Hutton,
Dr. Beth Murray-Davis, and Dr. Elizabeth K. Darling

1. Schummers L, McGrail K, **Darling EK**, Dunn S, Gayowsky A, Kaczorowski J, Norman WV. A more accurate approach to define abortion cohorts using linked administrative data: an application to Ontario, Canada. International Journal of Population Data Science. 2022 Apr 29;7(1). Available from: <https://doi.org/10.23889/ijpds.v7i1.1700>
2. Vanstone M, Panday J, Popoola A, Taneja S, Greyson D, McDonald SD, Pack R, Black M, **Murray-Davis B**, **Darling E**. Pregnant People's Perspectives On Cannabis Use During Pregnancy: A Systematic Review and Integrative Mixed-Methods Research Synthesis. Journal of Midwifery & Women's Health. Early View. 2022 Apr 20. Available from: [10.1111/jmwh.13363](https://doi.org/10.1111/jmwh.13363)
3. Panday J, Taneja S, Popoola A, Pack R, Greyson D, McDonald SD, Black M, **Murray-Davis B**, **Darling E**, Vanstone M. Correction to: Clinician responses to cannabis use during pregnancy and lactation: a systematic review and integrative mixed-methods research synthesis. Family Practice. 2022 Mar 28;cmac021. Available from: <https://doi.org/10.1093/fampra/cmac021>
4. Yousuf EI, Rochow N, Li J, Simioni J, Gunn E, **Hutton EK**, Morrison KM. Growth and body composition trajectories in infants meeting the WHO growth standards study requirements. Pediatric Research. 2022 Mar 16;1–8. Available from: <https://doi.org/10.1038/s41390-022-02005-y>
5. D'Souza R, Seymour RJ, Knight M, Dzakpasu S, Joseph KS, Thorne S, Ospina MB, Barrett J, Cook J, Fell, DB, Scott H, Metcalfe A, Akker T, Lapinsky S, Skeith L, **Murray-Davis B**, Shah P, Forte M, Ashraf R, Chundamala J, Hutchinson SA, Chen KK, Malhame I. Feasibility of establishing a Canadian Obstetric Survey System (CanOSS) for severe maternal morbidity: a study protocol. BMJ Open. 2022 Mar 1;12(3):e061093. Available from: <https://doi.org/10.1136/bmjopen-2022-061093>

6. Robinson C, Chanchlani R, Gayowsky A, **Darling E**, Seow H, Batthish M. Health care utilization and costs following Kawasaki disease. *Paediatrics & Child Health*. 2022 Mar 1;pxab092. Available from: <https://doi.org/10.1093/pch/pxab092>
7. **Murray-Davis B**, Grenier LN, Atkinson SA, Mottola MF, Wahoush O, Thabane L, Xie F, Vickers-Manzin J, Moore C, Hutton EK. How Do Health Schemas Inform Healthy Behaviours During Pregnancy? Qualitative Findings from the Be Healthy in Pregnancy (BHIP) Study. *Maternal Child Health Journal*. 2022 Feb 25. Available from: <https://doi.org/10.1007/s10995-022-03385-7>
8. Ganor Paz Y, Barzilay E, Saied Idriss S, **Murray-Davis B**, Melamed N, Ray J, Geary M, McDonald SD, Barrett J, Mawjee K, Bagheri N, Berger H. Association of the Cerebro-Placental Ratio with Adverse Outcomes in Pregnancies Affected by Gestational Diabetes Mellitus. *Journal of Ultrasound in Medicine*. Early View. 2022 Feb 17. Available from: <https://doi.org/10.1002/jum.15961>
9. **Murray-Davis B**, **Darling EK**, Berger H, Melamed N, Li J, Guarna G, Syed M, Barrett J, Geary M, Mawjee K, McDonald SD. Midwives perceptions of managing pregnancies complicated by obesity: A mixed methods study. *Midwifery*. 2022 Feb 1;105:103225. Available from: <https://doi.org/10.1016/j.midw.2021.103225>
10. Atkinson SA, Maran A, Dempsey K, Perreault M, Vanniyasingam T, Phillips SM, **Hutton EK**, Mottola MF, Wahoush O, Xie F, Thabane L. Be Healthy in Pregnancy (BHIP): A Randomized Controlled Trial of Nutrition and Exercise Intervention from Early Pregnancy to Achieve Recommended Gestational Weight Gain. *Nutrients*. 2022 Jan;14(4):810. Available from: <https://doi.org/10.3390/nu14040810>
11. Schummers L, **Darling EK**, Dunn S, McGrail K, Gayowsky A, Law MR, Laba TL, Kaczorowski J, Norman WV. Abortion Safety and Use with Normally Prescribed Mifepristone in Canada. *New England Journal of Medicine*. 2022 Jan 6;386(1):57–67. Available from: [DOI:10.1056/NEJMsa2109779](https://doi.org/10.1056/NEJMsa2109779)
12. Hirsch L, Shah B, Berger H, Geary MP, McDonald SD, **Murray-Davis B**, Guan J, Halperin I, Retnakaran R, Barrett J, Melamed N. Can the antepartum oral glucose tolerance test predict future diabetes in women without gestational diabetes? *American Journal of Obstetrics & Gynecology*. 2022 Jan 1;226(1):S89–90. Available from: <https://doi.org/10.1016/j.ajog.2021.11.163>



Research Productivity

13. **Darling EK**, Easterbrook R, Grenier LN, Malott A, **Murray-Davis B**, Mattison CA.. Lessons learned from the implementation of Canada's first alongside midwifery unit: A qualitative explanatory study. *Midwifery*. 2021 Dec;103:103146. Available from: <https://doi.org/10.1016/j.midw.2021.103146>
14. Brunton G, Wahab S, Sheikh H, **Murray-Davis B**. Global stakeholder perspectives of home birth: a systematic scoping review. *Systematic Reviews*. 2021 Nov 2;10(1):291. Available from: <https://doi.org/10.1186/s13643-021-01837-9>
15. MacDonald T, Dorcelly O, Ewusie JE, **Darling EK**, Moll S, Mbuagbaw L. The effect of a new maternity unit on maternal outcomes in rural Haiti: an interrupted time series study. *BMC Pregnancy & Childbirth*. 2021 Sep 4;21(1):601. Available from: <https://doi.org/10.1186/s12884-021-04062-3>
16. Joseph KS, Lee L, Arbour L, Auger N, **Darling EK**, Evans J, Little J, McDonald SD, Moore A, Murphy PA, Ray JG, Scott H, Shah P, Vanden Hof M, Kramer MS. Stillbirth in Canada: anachronistic definition and registration processes impede public health surveillance and clinical care. *Canadian Journal of Public Health*. 2021 Aug;112(4):766-772. Available from: <https://doi.org/10.17269/s41997-021-00483-x>
17. Homann CM, Rossel CAJ, Dizzell S, Bervoets L, Simioni J, Li J, Gunn E, Surette MG, de Souza RJ, Mommers M, **Hutton EK**, in Two Intercontinental Cohorts. *Nutrients*. 2021 Jul 30;13(8):2639. Available from: <https://doi.org/10.3390/nu13082639>
18. Ahmed RJ, Gafni A, **Hutton EK**, Hu ZJ, Sanchez JJ, Murphy HR, Feig DS: CONCEPTT Collaborative Group. The cost implications of continuous glucose monitoring in pregnant women with type 1 diabetes in 3 Canadian provinces: a posthoc cost analysis of the CONCEPTT trial. *CMAJ Open*. 2021 Jun 4;9(2):E627-E634. Available from: <https://doi.org/10.9778/cmajo.20200128>
19. Landry S, Arseneau E, **Darling EK**. "It's a Little Bit Tricky: Results from the POLYamorous Childbearing and Birth Experiences Study (POLYBABES). *Archives of Sexual Behaviour*. 2021 May;50(4):1479-1490. Available from: <https://doi.org/10.1007/s10508-021-02025-5>

20. Dizzell S, Stearns JC, Li J, van Best N, Bervoets L, Mommers M, Penders J, Morrison KM, **Hutton EK**: GI-MDH Consortium Partners. Investigating colonization patterns of the infant gut microbiome during the introduction of solid food and weaning from breastmilk: A cohort study protocol. PLoS One. 2021 Apr 2;16(4):e0248924. Available from: <https://doi.org/10.1371/journal.pone.0248924>
21. Reszel J, Weiss D, **Darling EK**, Sidney D, Van Wagner V, Soderstrom B, Rogers J, Holmberg V, Peterson WE, Khan BM, Walker MC, Sprague AE. Client Experience with the Ontario Birth Center Demonstration Project. Journal of Midwifery Womens Health. 2021 Mar;66(2):174-184. Available from: <https://doi.org/10.1111/jmwh.13164>
22. Grenier LN, Atkinson SA, Mottola MF, Wahoush O, Thabane L, Xie F, Vickers-Manzin J, Moore C, **Hutton EK, Murray-Davis B**. Be Healthy in Pregnancy: Exploring factors that impact pregnant women's nutrition and exercise behaviours. Maternal & Child Nutrition. 2021 Jan;17(1):e13068. Available from: <https://doi.org/10.1111/mcn.13068>
23. Aviram A, Berger H, Abdulaziz KE, Barrett JFR, **Murray-Davis B**, McDonald SD, Geary M, Melamed N. Outcomes Associated With Hypertensive Disorders of Pregnancy in Twin Compared With Singleton Gestations. Obstetrics & Gynecology. 2021;138(3):449-458. Available from: [doi: 10.1097/AOG.0000000000004506](https://doi.org/10.1097/AOG.0000000000004506)
24. Robinson C, Lao F, Chanchlani R, Gayowsky A, **Darling EK**, Batthish M. Long-term hearing and neurodevelopmental outcomes following Kawasaki disease: A population-based cohort study. Brain and Development. 2021;43(7):735-744. Available from: <https://doi.org/10.1016/j.braindev.2021.03.001>
25. Corbin A, **Darling EK**, Pearce-Kelly T, Wise K. Health leadership competencies for health leaders around the world and their application to the Canadian midwifery profession: a scoping review. Canadian Journal of Midwifery Research and Practice. 2021;20. Available from: <https://www.cjmrp.com/articles/volume-20-2021/the-application-of-health-leadership-competencies-around-the-world-to-the-canadian-midwifery-profession-a-scoping-review>
26. Mattison CA, Bourret K, Hebert E, Leshabari S, Kabeya A, Achiga P, Robinson J, **Darling EK**. Health systems factors impacting the integration of midwifery: an evidence-informed framework on strengthening midwifery associations. BMJ Global Health. 2021;6:e004850. Available from: <http://dx.doi.org/10.1136/bmjgh-2020-004850>



Research Productivity

27. **Darling EK**, Kjell C, Tubman-Broeren M, Marquez O. The Effect of Prenatal Care Delivery Models Targeting Populations with Low Rates of PNC Attendance: A Systematic Review. *Journal of Health Care for the Poor and Underserved*. 2021;32(1):119-136. Available from: [doi:10.1353/hpu.2021.0012](https://doi.org/10.1353/hpu.2021.0012)
28. Hirsch L, Ray JG; Barrett, J, Berger H, Geary M, McDonald SD, Diong C, Gandhi S, Guan J, **Murray-Davis B**. Maternal cardiovascular disease after twin pregnancies complicated by hypertensive disorders of pregnancy: a population-based cohort study. *CMAJ*. 2021;193(37):E1448-E1458. Available from: <https://doi.org/10.1503/cmaj.202837>
29. Hirsch L, Shah BR, Berger H, Geary M, McDonald SD, **Murray-Davis B**, Guan J, Halperin I, Retnakaran R, Barrett J. Developing twin-specific 75g oral glucose tolerance test diagnostic thresholds for gestational diabetes based on the risk of future maternal diabetes: a population-based cohort study. *BJOG: An International Journal of Obstetrics & Gynaecology*. 2021;128(12):1975-1985. Available from: <https://doi.org/10.1111/1471-0528.16773>
30. Hirsch L, Shah BR, Berger H, Geary M, McDonald SD, **Murray-Davis B**, Guan J, Halperin I, Retnakaran R, Barrett J, Melamed N. Oral Glucose Tolerance Test Results in Pregnancy Can Be Used to Individualize the Risk of Future Maternal Type 2 Diabetes Mellitus in Women With Gestational Diabetes Mellitus. *Diabetes Care*. 2021;44(8):1860–1867. Available from: <https://doi.org/10.2337/dc21-0659>
31. Homann CM, Dizzell S, Azab S, **Hutton EK**, Morrison KM, Stearns JC. GI-MDH Consortium. Investigation of the impact of stool collection methods on the metabolomics analysis/profiles of infant fecal samples. *BioRxiv*. Preprint. 2021. Available from: <https://doi.org/10.1101/2021.09.21.461251>
32. Magee LA, Singer J, Lee T, Rey E, Asztalos E, **Hutton E**, Helewa M, Logan AG, Ganzevoort W, Welch R, Thornton JG, Woo Kinshella ML, Green M, Tsigas E, von Dadelszen P, on behalf of the CHIPS Study Group. The impact of pre-eclampsia definitions on the identification of adverse outcome risk in hypertensive pregnancy – analyses from the CHIPS trial (Control of Hypertension in Pregnancy Study). *BJOG: An International Journal of Obstetrics & Gynaecology*. 2021;128(8):1373-1382. Available from: <https://doi.org/10.1111/1471-0528.16602>
33. Lipworth H, Melamed N, Berger H, Geary M, McDonald SD, **Murray-Davis B**, Murphy KE, Redelmeier DA, Yoon EW, Barrett JFR. Maternal weight gain and pregnancy outcomes in twin gestations. *American Journal of Obstetrics and Gynecology*. 2021;225(5):532.e1-532.e12. Available from: <https://doi.org/10.1016/j.ajog.2021.04.260>

34. MacDonald T, Dorcelly O, Ewusie J, **Darling EK**, Greene S, Moll S, Mbuagbaw L. Maternal-newborn outcomes in rural Haiti: an interrupted time series study. *Journal of Obstetrics and Gynaecology Canada*. 2021;43(5):662-663. Available from: <https://doi.org/10.1016/j.jogc.2021.02.047>
35. Moffat T, McKerracher L, Oresnik S, Atkinson SA, Barker M, McDonald SD, **Murray-Davis B**, Sloboda DM. Investigating the normalization and normative views of gestational weight gain: Balancing recommendations with the promotion and support of healthy pregnancy diets. *American Journal of Human Biology*. 2021;33(5):e23604. Available from: <https://doi.org/10.1002/ajhb.23604>
36. Robinson C, Chanchlani R, Gayowsky A, Brar S, **Darling E**, Demers C, Klowak J, Knight B, Kuenzig E, Mondal T. Incidence and short-term outcomes of Kawasaki disease. *Pediatric Research*. 2021;90:670-677. Available from: <https://doi.org/10.1038/s41390-021-01496-5>
37. Schummers L, **Darling EK**, Gayowsky A, Dunn S, McGrail K, Law MR, Laba TL, Norman WV. Abortion utilization and safety when mifepristone is available without regulations restricting practice? A population-based study using linked health administrative data from Ontario. *Journal of Obstetrics and Gynaecology Canada*. 2021;43(5):671-672. Available from: <https://doi.org/10.1016/j.jogc.2021.02.077>
38. Shinar S, Melamed N, Abdulaziz KE, Ray JG, Riddell C, Barrett J, **Murray-Davis B**, Mawjee K, McDonald SD, Geary M. Changes in rate of preterm birth and adverse pregnancy outcomes attributed to preeclampsia after introduction of a refined definition of preeclampsia: A population-based study. *Acta Obstetrica et Gynecologica Scandinavica*. 2021;100(9):1627-1635. Available from: <https://doi.org/10.1111/aogs.14199>
39. Shoemaker ES, Saiyin T, Smith S, Loutfy M, **Darling E**, Walker M, Hawken S, Begum J, Bibeau C, Bertozzi B, Fraleigh A, Kwaramba G, Johnson K, Cousineau A, Kendall CE. Patterns of cesarean birth among women living with HIV in Ontario: A cross-sectional, population-level study. *Birth*. 2021;48(3):357-65. Available from: <https://doi.org/10.1111/birt.12545>
40. Zafarmand MH, Goossens SMTA, Tajik P, Bossuyt PM, Asztalos EV, Gardener GJ, Willan AR, Roumen FJME, Mol BW, Barrett JY, **Hutton EK**: The Twin Birth Study Collaborative Group. Planned Cesarean or planned vaginal delivery for twins: secondary analysis of randomized controlled trial. *Ultrasound in Obstetrics & Gynecology*. 2021;57(4):582-591. Available from: <https://doi.org/10.1002/uog.21907>



Research Productivity

41. Seager E, **Murray-Davis B**, Malott A. Facilitating Formative Feedback in Midwifery Education: A Narrative Review. *Canadian Journal of Midwifery Research and Practice* 2021. 2021;20:3(56-65).
42. Yousuf EI, Carvalho M, Dizzell SE, Kim S, Gunn E, Twiss J, Giglia L, Stuart C, **Hutton EK**, Morrison KM, Stearns JC. Persistence of Suspected Probiotic Organisms in Preterm Infant Gut Microbiota Weeks After Probiotic Supplementation in the NICU. *Front Microbiology*. 2020 Sep 25;11:574137. Available from: <https://doi.org/10.3389/fmicb.2020.574137>
43. Mattison CA, Lavis JN, Wilson MG, **Hutton EK**, Dion ML. A critical interpretive synthesis of the roles of midwives in health systems. *Health Research Policy & Systems*. 2020 Jul 8;18(1):77. Available from: <https://doi.org/10.1186/s12961-020-00590-0>
44. Dzakpasu S, Deb-Rinker P, Arbour L, **Darling EK**, Kramer MS, Liu S, Luo W, Murphy PA, Nelson C, Ray JG, Scott H, VandenHof M, Joseph KS. Severe maternal morbidity surveillance: Monitoring pregnant women at high risk for prolonged hospitalisation and death. *Paediatric Perinatal Epidemiology*. 2020 Jul;34(4):427-439. Available from: <https://doi.org/10.1111/ppe.12574>
45. **Darling EK**, Babe G, Sorbara C, Perez R. Trends in very early discharge from hospital for newborns under midwifery care in Ontario from 2003 to 2017: a retrospective cohort study. *CMAJ Open*. 2020 Jun 25;8(2):E462-E468. Available from: <https://doi.org/10.9778/cmajo.20190165>
46. Reitsma A, Simioni J, Brunton G, Kaufman K, **Hutton EK**. Maternal outcomes and birth interventions among women who begin labour intending to give birth at home compared to women of low obstetrical risk who intend to give birth in hospital: A systematic review and meta-analyses. *EClinicalMedicine*. 2020 Apr 5;21:100319. Available from: <https://doi.org/10.1016/j.eclinm.2020.100319>
47. Berger H, Melamed N, **Murray-Davis B**, Hasan H, Mawjee K, Barrett J, McDonald SD, Geary M, Ray JG. Impact of diabetes, obesity and hypertension on preterm birth: Population-based study. *PLoS One*. 2020 Mar 25;15(3):e0228743. Available from: <https://doi.org/10.1371/journal.pone.0228743>
48. Mattison CA, Lavis JN, **Hutton EK**, Dion ML, Wilson MG. Understanding the conditions that influence the roles of midwives in Ontario, Canada's health system: an embedded single-case study. *BMC Health Services Research*. 2020 Mar 12;20(1):197. Available from: <https://doi.org/10.1186/s12913-020-5033-x>

49. Ashwal E, Saied S, Melamed N, Barrett J, Mawjee K, **Murray-Davis B**, McDonald SD, Ray JG, Geary M, Berger H. Failed lifestyle modification in GDM—The effect of fasting versus postprandial abnormalities on fetal growth. *American Journal of Obstetrics & Gynecology*. 2020;222(1):S257. Available from: <https://doi.org/10.1016/j.ajog.2019.11.404>
50. Ashwal E, Saied S, Melamed N, Barrett J, Mawjee K., **Murray-Davis B**, McDonald SD, Ray JG, Geary M, Berger H. Fetal growth trajectories in Gestational Diabetes Mellitus Pregnancies and Large for Gestational Age at Birth. *American Journal of Obstetrics & Gynecology*. 2020;222(1):S102. Available from: <https://doi.org/10.1016/j.ajog.2019.11.151>
51. Ashwal E, Saied S., Melamed N, Barrett J, Mawjee K, **Murray-Davis B**, McDonald SD, Ray JG, Geary M, Berger H. Characteristics of abnormal oral glucose tolerance test in GDM pregnancies and pregnancy outcome. *American Journal of Obstetrics & Gynecology*. 2020;222(1):S101. Available from: <https://doi.org/10.1016/j.ajog.2019.11.150>
52. **Darling EK, Murray-Davis B**, Ahmed RJ, Vanstone M. Access to Ontario Midwifery Care by Neighbourhood-Level Material Deprivation Quintile, 2006–2017: A Retrospective Cohort Study. *Canadian Journal of Midwifery Research and Practice*. 2020;19(3):8-23. Available from: <https://www.cjmrp.com/articles/volume-19-2020/access-to-ontario-midwifery-care-by-neighbourhood-level-material-deprivation-quintile-2006-2017-a-retrospective-cohort-study>
53. **Darling EK**, MacDonald T, Nussey L, **Murray-Davis B**, Vanstone M. Making Midwifery Services Accessible to People of Low SES: A Qualitative Descriptive Study of the Barriers Faced by Midwives in Ontario. *Canadian Journal of Midwifery Research and Practice*. 2020;19(3):40-52. Available from: https://www.researchgate.net/publication/349928567_Making_midwifery_services_accessible_to_people_of_low_SES_A_qualitative_descriptive_study_of_the_barriers_faced_by_midwives_in_Ontario
54. Feig DS, Donovan LE, Zinman B, Sanchez JJ, Asztalos E, Ryan EA, Fantus IG, **Hutton E**, Armson AB, Lipscombe LL, Simmons D, Barrett JFR, Karanickolas PJ, Tobin S, McIntyre HD, Tian SY, Tomlinson G, Murphy KE; MiTy Collaborative Group.. Metformin in women with type 2 diabetes in pregnancy (MiTy): a multicentre, international, randomised, placebo-controlled trial. *Lancet Diabetes Endocrinology*. 2020 Oct;8(10):834-844. Available from: [https://doi.org/10.1016/S2213-8587\(20\)30310-7](https://doi.org/10.1016/S2213-8587(20)30310-7)
55. Friedman CL, Ahmed RJ, **Hutton EK, Darling EK**. Resident Attitudes Towards Caesarean Delivery in Canadian Obstetrics and Gynaecology Residency Programs. *Journal of Obstetrics and Gynaecology Canada*. 2020 Jan;42(1):16-24. Available from: <https://doi.org/10.1016/j.jogc.2019.06.013>

Research Productivity

56. Galazzo G, van Best N, Bervoets L, Dapaah IO, Savelkoul PH, Hornef MW, **Hutton EK**, Morrison KM, Holloway AC McDonald H. Development of the microbiota and associations with birth mode, diet, and atopic disorders in a longitudinal analysis of stool samples, collected from infancy through early childhood. *Gastroenterology*. 2020;158(6):1584-1596. Available from: <https://doi.org/10.1053/j.gastro.2020.01.024>
57. McKerracher L, Oresnik S, Moffat T, **Murray-Davis B**, Vickers-Manzin J, Zalot L, Williams D, Sloboda DM, Barker ME. Addressing embodied inequities in health: how do we enable improvement in women's diet in pregnancy? *Public Health Nutrition*. 2020;23(16):2994-3004. Available from: [doi:10.1017/S1368980020001093](https://doi.org/10.1017/S1368980020001093)
58. Nussey L, MacDonald T, **Murray-Davis B**, Vanstone M, **Darling EK**. Community As Client: A Qualitative Descriptive Study of the Work of Midwives to Increase Access to Midwifery Care. *Canadian Journal of Midwifery Research and Practice*. 2020;19(3): 24-39. Available from: <https://www.cjmrp.com/articles/volume-19-2020/community-as-client-a-qualitative-descriptive-study-of-the-work-of-midwives-to-increase-access-to-midwifery-care>
59. McKerracher L, Barker ME, Moffat C, McDonald S, **Murray-Davis B**, McConnell M, Atkinson S, Sloboda D. Knowledge about DOHaD is independently associated with variation in diet quality during pregnancy. *Maternal & Child Nutrition*. 2020;16(2):e12891. Available from: <https://doi.org/10.1111/mcn.12891>
60. **Murray-Davis B**, **Hutton EK**, Carty E, Kaufman K, Butler M, Martin G, Lam A, Bi M, Belanger J, Campbell Allison. Comprehensive Midwifery-The role of the midwife in health care practice, education, and research: An Interactive Guide to the Theory and Evidence of Practice. 2020. Available from: <https://openlibrary-repo.ecampusontario.ca/jspui/handle/123456789/676>
61. **Murray-Davis B**, Berger H, Melamed N, Hasan H, Mawjee K, Syed M, Ray JG, Geary M, Barrett J, McDonald SD. Gestational weight gain counseling practices among different antenatal health care providers: a qualitative grounded theory study. *BMC Pregnancy & Childbirth*. 2020;20(1):102. Available from: <https://doi.org/10.1186/s12884-020-2791-8>
62. Nussey L, Hunter A, Krueger S, Malhi R, Giglia L, Seigel S, Simpson S, Wasser R, Patel T, Small D, **Darling EK**. Sociodemographic Characteristics and Clinical Outcomes of People Receiving Inadequate Prenatal Care: A Retrospective Cohort Study. *Journal of Obstetrics and Gynaecology Canada*. 2020 May;42(5):591-600. Available from: <https://doi.org/10.1016/j.jogc.2019.08.005>

63. Ouellette AC, **Darling EK**, Sivapathasundaram B, Babe G, Perez R, Chan AC, Chanchlani R. Incidence, Risk factors, and Outcomes of Neonatal Renal Vein Thrombosis in Ontario: Population-based cohort study. *Kidney360*. 2020;1(7):640-647. Available from: <https://doi.org/10.34067/KID.0000912019>
64. Paz YG, Barzilay E, Suraya S, **Murray-Davis B**, Melamed N, Ray J, Geary M, McDonald S, Barrett J, Mawjee K. OC17. 05: Cerebroplacental ratio use to predict adverse outcomes in pregnancies complicated by gestational diabetes. *Ultrasound in Obstetrics & Gynecology*. 2020;56(S1):48-49. Available from: <https://doi.org/10.1002/uog.22325>
65. Ram M, Berger H, Lipworth H, Geary M, McDonald SD, **Murray-Davis B**, Riddell C, Hasan H, Barrett J, Melamed N. The relationship between maternal body mass index and pregnancy outcomes in twin compared with singleton pregnancies. *International Journal of Obesity*. 2020;44(1):33-44. Available from: <https://doi.org/10.1038/s41366-019-0362-8>
66. Reszel J, Weiss D, **Darling EK**, Sidney D, Van Wagner V, Soderstrom B, Rogers J, Holmberg V, Peterson WE, Khan BM, Walker MC. Client Experience with the Ontario Birth Center Demonstration Project. *Journal of Midwifery & Women's Health*. 2020;66(2):174-184. Available from: <https://doi.org/10.1111/jmwh.13164>
67. Robinson C, Chanchlani R, Gayowsky A, Brar S, **Darling EK**, Demers C, Mondal T, Parekh R, Seow H, Batthish M. Late Cardiovascular Outcomes in Children with Kawasaki Disease: A Population-based Cohort Study. *Arthritis & Rheumatology*. 2020;72. Available from: <https://acrabstracts.org/abstract/late-cardiovascular-outcomes-in-children-with-kawasaki-disease-a-population-based-cohort-study/>
68. Robinson C, Chanchlani R, Schlorff M, Lao F, Mondal T, Demers C, **Darling EK**, Brar S, Parekh R, Seow H. Kawasaki Disease in Ontario Children from 1995-2017: A Population-based Descriptive Analysis. *Arthritis & Rheumatology*. 2020.72:100-103. Available from: <https://acrabstracts.org/abstract/kawasaki-disease-in-ontario-children-from-1995-2017-a-population-based-descriptive-analysis/>



Research Productivity

69. Schlorff M, Robinson C, Chanchlani R, Schlorff M, Lao F, Mondal T, Demers C, **Darling EK**, Brar S, Parekh R, Seow H. Kawasaki disease in Ontario children from 1995-2017: A population-based descriptive analysis. Paediatrics & Child Health. 2020;25(Supplement_2):e46-e46. Available from: <https://doi.org/10.1093/pch/pxaa068.110>
70. Schummers L, **Darling EK**, Law MR, Laba TL, McGrail K, Dunn S, Norman WV. Do medication abortion complications increase when restrictive risk evaluation and mitigation strategy regulations are removed? A population-based study using single-payer linked health administrative data. Contraception. 2020;102(4):P273. Available from: <https://doi.org/10.1016/j.contraception.2020.07.010>
71. Van Wagner V, **Darling EK**. 5 Disputing Evidence: Canadian Health Professionals' Responses to Evidence about Midwifery. Health Matters. 2020:92-110. Available from: <https://doi.org/10.3138/9781487536961-005>

Peer Reviewed Oral & Poster Presentations

Jan 2020 to June 2022

Between Jan 2020 and June 2022, we presented our findings through peer reviewed oral and poster presentations at national and international conferences.

1. Norman WV, **Darling E**, Dunn S, Law M, Kaczorowski J, Schummers L, McGrail K. Changing mifepristone to a normal prescription: effect on primary care abortion provision. 50th Annual Scientific Meeting of the Society of Academic Primary Care (SAPC). Lancashire, United Kingdom. Oral. July 4-6, 2022.
2. Norman WV, **Darling E**, Dunn S, Law M, Kaczorowski J, Schummers L, McGrail K. Mifepristone's effect on the abortion workforce and rural services in Ontario. Society of Obstetricians and Gynecologists of Canada Annual Clinical and Scientific Conference. Quebec City, QC. Poster. June 7-10, 2022.
3. Ricci C, Otterman V, Bennett TL, Metcalfe S, **Darling E**, Semenic S, Dzakpasu S on behalf of the Canadian Perinatal Surveillance System. Prevalence and Predictors of Exclusive and Any Breastfeeding for At Least Six Months in Canada. Canadian National Perinatal Research Meeting. Virtual. Poster. May 30-June 3, 2022.
4. **RubyE***, Li J, **Darling EK**, **Berger H**, **Melamed N**, **Murray-Davis B**. Gestational Diabetes Mellitus Screening and Counselling Practices of Antenatal Healthcare Providers in Ontario: Exploring the Perspectives of Patients. Canadian National Perinatal Research Meeting. Virtual. Poster. May 30-June 3, 2022.
5. Norman WV, **Darling E**, Dunn S, Law M, Kaczorowski J, Schummers L, McGrail K. Changing mifepristone to a normal prescription: effect on abortion rate, method and workforce. 16th Congress of the European Society of Contraception and Reproductive Health, Ghent, Belgium. Poster. May 25-28, 2022.

(*) indicates trainee, **bolded text** indicates MMRC affiliates



Research Productivity

6. **Ghandi S***, Ahmed M, Hutton EK, Darling EK, Banfield L, Mattison C, Brunton G, Kaufman K, Ahmed R, Murray-Davis B. Identifying Strengths and Gaps in Canadian Midwifery Research: A Scoping Review. McMaster Midwifery Research Center Research Symposium. Virtual. Poster with oral presentation. Mar 28-Apr 1, 2022.
7. **Hilsenteger E***, Johnston B, Gum L, Murray-Davis B. The Global Midwifery Peer-to-Peer Program. McMaster Midwifery Research Center Research Symposium. Virtual. Poster with oral presentation. Mar 28-Apr 1, 2022.
8. **Ramlogan-Salanga C***, Campbell A, Grierson L, Darling EK. Transforming the Ontario Midwifery Education Program through social justice curriculum: a modified Delphi study. McMaster Midwifery Research Center Research Symposium. Virtual. Poster with oral presentation. Mar 28-Apr 1, 2022.
9. **Ruby E***, Li J, Darling EK, Berger H, Melamed N, Murray-Davis B. Gestational Diabetes Mellitus Screening and Counselling Practices of Antenatal Healthcare Providers in Ontario: Exploring the Perspectives of Patients. McMaster Midwifery Research Center Research Symposium. Virtual. Poster with oral presentation. Mar 28-Apr 1, 2022.
10. MacDonald T*, Dorcely O, Ewusie JE, Darling EK, Moll S, Mbuagbaw L. Maternal-newborn outcomes in rural Haiti: an interrupted time series study. 2021 Annual Clinical and Scientific Conference of the Society of Obstetricians and Gynecologists of Canada. Virtual. Poster. June 20-25, 2021.
11. Schummers L*, Darling EK, Gayoswky A, Dunn S, McGrail K, Law MR, Laba TL, Norman WV. Abortion utilization and safety when mifepristone is available without regulations restricting practice? A population-based study using linked health administrative data from Canada. Annual Clinical and Scientific Conference of the Society of Obstetricians and Gynecologists of Canada. Virtual. Poster. June 20-25, 2021.
12. Darling EK, Deluce S*. Non-indicated transfers of care from midwives to physicians in Ontario, Canada. 32nd International Confederation of Midwives Congress. Bali, Indonesia. June 16, 2021.

13. **Darling EK**. Lessons learned from the implementation of Canada's first alongside midwifery unit: A explanatory case study. Canadian Association of Health Services and Policy Research. Virtual. Oral. May 2021.
14. **Johnston B, Murray-Davis B**. The Evaluation of Point-of-Care Ultrasound (POCUS) Training for Midwives. Association of Ontario Midwives (AOM) Midwifery Research Symposium. Virtual. Oral. March 2021.
15. **Johnston B, Murray-Davis B**. The Evaluation of Point-of-Care Ultrasound (POCUS) Training for Midwives. Canadian National Perinatal Research Meeting. Virtual. Oral. February 2021.
16. Shamki T*, **Ramlogan-Salanga C***, **Darling E**. How racialized midwifery students in Ontario experience resilience. Canadian Association of Midwives November. Virtual. Oral. November, 2020.
17. **Seager E***, **Darling E**. Cervical dilation on hospital admission: supporting best practices to achieve a vaginal delivery. Canadian Association of Midwives November. Virtual. Oral. November, 2020.
18. **Mattison CA***, **Bourret K***, Robinson J, Hebert E, **Darling E**. Building the evidence for best practices in midwifery skills transfer and reciprocal midwifery association strengthening. Canadian Association of Midwives November. Virtual. Oral. November, 2020.
19. Schummers L*, **Darling EK**, Gayoswky A, Dunn S, McGrail K, Law MR, Laba TL, Norman WV. Do medication abortion complications increase without regulations restricting mifepristone practice? a population-based study using single-payer linked health administrative data from Ontario, Canada, 2012-2019. National Abortion Federation of Canada Annual Meeting. Virtual. Oral. November 21, 2020.
20. Schummers L*, **Darling EK**, Gayoswky A, Dunn S, McGrail K, Law MR, Laba TL, Norman WV. Do medication abortion complications increase without regulations restricting practice? a population-based study using single-payer linked health administrative data? Royal Society of Medicine, Sexuality and Sexual Health Annual Meeting: Excellence in adversity: Abortion care in the coronavirus pandemic. Virtual. Oral. October 12, 2020.



Research Productivity

21. **Johnston B, Murray-Davis B.** The Evaluation of Point-of-Care Ultrasound (POCUS) Training for Midwives. McMaster Midwifery Research Symposium. Virtual. Oral. Oct 2020.
22. Ganor Paz Y, Barzilay E, Saeid S, Berger H, **Murray-Davis B**, Melamed N, Ray J, Geary M, McDonald S, Barrett J, Mawjee K, Bagheri N. The use of the cerebro-placental ratio to predict adverse outcomes in pregnancies complicated by Gestational Diabetes. Virtual World Congress on Ultrasound in Obstetrics and Gynecology. Virtual. Oral. Oct 2020.
23. Schummers L*, **Darling EK**, Dunn S, McGrail K, Law MR, Laba TL, Norman WV. Do medication abortion complications increase when restrictive Risk Evaluation and Mitigation Strategy regulations are removed? A population-based study using single-payer linked health administrative data. Society of Family Planning Annual Meeting. Virtual. Oral. October 9, 2020.
24. Schummers L*, **Darling EK**, Dunn S, McGrail K, Law MR, Lea-Laba T, Norman WV. Keynote address: Outcomes when mifepristone is available as a normal prescription: A population-based interrupted time series study using single-payer linked health administrative data. 2020 International Federation of Professional Abortion and Contraception Associates Annual Conference. Berlin, Germany (postponed due to COVID-19). Oral. September 21, 2020.
25. Schummers L*, **Darling EK**, Dunn S, Gayowsky A, McGrail K, Law MR, Norman WV. Induced abortion in Canada: Developing methods for accurate surveillance and complication reporting. Academic Perinatology Rounds, UBC Obstetrics & Gynecology. Vancouver, BC (postponed due to COVID-19). April 22, 2020.
26. Ashwal E, Saied S, Melamed N, Barrett J, Mawjee K, **Murray-Davis B**, McDonald SD, Ray GJ, Geary M, Berger H. Characteristics of abnormal oral glucose tolerance test in GDM pregnancies and pregnancy outcome. Society of Maternal Fetal Medicine Annual Conference. Grapevine, Texas. February 2020.
27. Ashwal E, Saied S, Melamed N, Barrett J, Mawjee K, **Murray-Davis B**, McDonald SD, Ray GJ, Geary M, Berger H. Failed lifestyle modification in GDM—The effect of fasting versus postprandial abnormalities on fetal growth. Society of Maternal Fetal Medicine Annual Conference. Grapevine, Texas. February 2020.
28. Ashwal E, Saied S, Melamed N, Barrett J, Mawjee K, **Murray-Davis B**, McDonald SD, Ray GJ, Geary M, Berger H. Fetal growth trajectories in Gestational Diabetes Mellitus Pregnancies and Large for Gestational Age at Birth. Society of Maternal Fetal Medicine Annual Conference. Grapevine, Texas. February 2020.

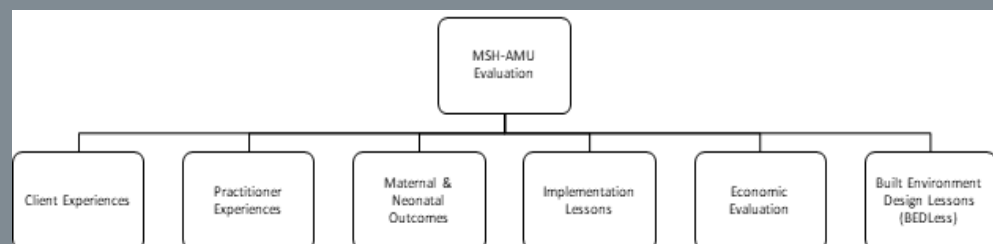
Spotlight



Evaluation of the Oak Valley Alongside Midwifery Unit:
Co-Principal Investigators Dr. Beth Murray-Davis,
Dr. Liz Darling, Prof. Eileen Hutton

The evaluation study of the Oak Valley Health (formerly Markham Stouffville Hospital) Alongside Midwifery Unit (AMU) is reaching its conclusion. Four of the six study components are complete and awaiting publication. Two articles have been published, two more are under review, and we expect at least a further 3 published articles. Our findings indicate the AMU model resulted in high levels of client and midwife satisfaction. The AMU itself improved midwifery integration into the hospital, and the intentional design of the space benefited all users of the space, enabling satisfaction and a feeling of ownership. Healthcare practitioners perceived client care was enhanced by the ways in which the AMU model promoted four factors: collaboration between healthcare practitioners, safety, role clarity, and change management.

1. Darling EK, Easterbrook R, Grenier LN, Malott A, Murray-Davis B, Mattison CA.. Lessons learned from the implementation of Canada's first alongside midwifery unit: A qualitative explanatory study. *Midwifery*. 2021 Dec;103:103146. Available from: <https://doi.org/10.1016/midw.2021.103146>
2. Murray-Davis B, Grenier LN, Mattison CA, Malott A, Cameron C, Hutton EK, Darling EK. Promoting safety and role clarity among health professionals on Canada's First Alongside Midwifery Unit (AMU): A mixed-methods evaluation. *Midwifery*. 2022 Aug;111:103366. Epub May 2022 Available from: <https://pubmed.ncbi.nlm.nih.gov/35594803/>



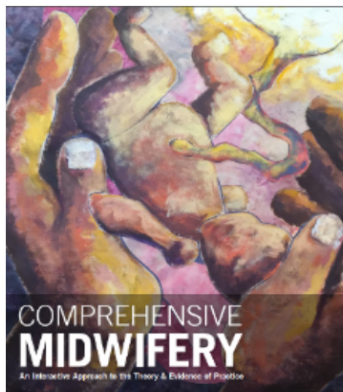
McMaster e-Book Foundry Textbooks

Our e-Book Foundry has published six midwifery education e-books, the first ever midwifery-specific textbooks in Canada, that include: Comprehensive Midwifery Vol. 1: Professional Roles, Vol. 2: Normal Pregnancy, Birth, Postpartum & Newborn Care, Vol. 3: Management of Complications, Physical Assessment of the Well Woman & Newborn, Pharmacology Revealed, and Woman-Centered Reproductive Health Care: An e-Resource for Lady Health Visitors and Midwives in Pakistan that is now being piloted.

Samples of the books can be found here <https://gumroad.com/bcw> and are now available in print and interactive e-textbooks versions.

The books have been adopted as required texts across Canada and in some US and Australian midwifery education programs. The books include the contributions of a team of technical and creative designers, more than 50 authors, 10 medical illustrators, and 40 midwives across Ontario who participated in videos outlining tips for best practice.

We are continuing to evaluate the educational impact of these books as a learning resource.



VOLUME 1:
PROFESSIONAL ROLES



VOLUME 2:
NORMAL PREGNANCY, BIRTH, POSTPARTUM
AND NEWBORN CARE



VOLUME 3:
MANAGEMENT OF COMPLICATIONS ARISING IN
PREGNANCY, BIRTH, POSTPARTUM & NEWBORN CARE

